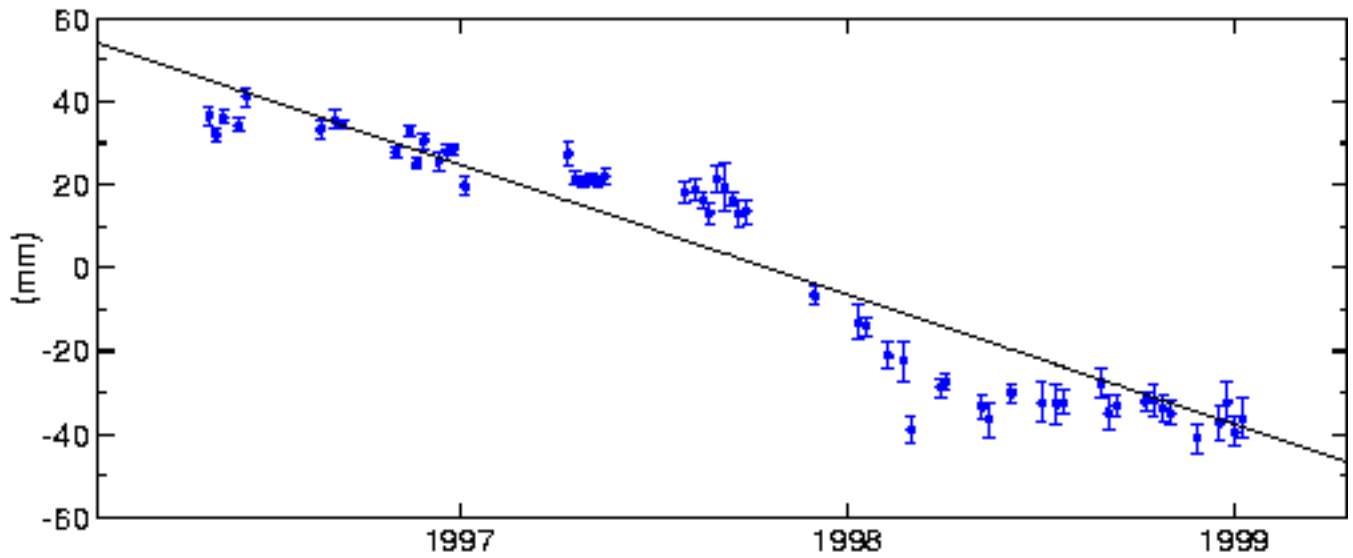
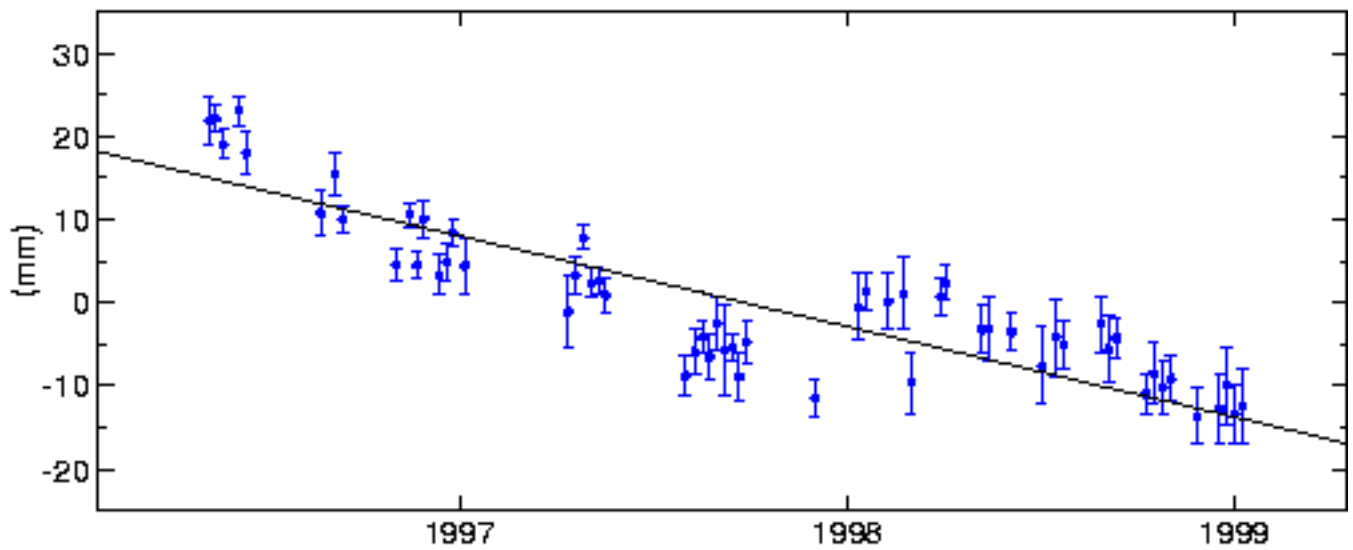


CASA North Offset 4190581.704 m
rate(mm/yr)= -31.3 ± 0.4 nrms= 4.00 wrms= 8.0



CASA East Offset 21251509.548 m
rate(mm/yr)= -10.9 ± 0.4 nrms= 2.14 wrms= 4.9



CASA Up Offset 2390.463 m
rate(mm/yr)= 42.0 ± 1.7 nrms= 1.85 wrms= 17.4

