

Geoscience in Your State: Texas

INTRODUCTION

Geoscience is a discipline that is at the intersection of many disciplines, including geology, geophysics, and hydrology. It is a science that is essential to the economy, the environment, and the quality of life. Geoscience is a science that is essential to the economy, the environment, and the quality of life.



By the numbers: Texas

- 54,266 geoscience employees (excludes self-employed)¹
- 7.2 billion gallons/day: total groundwater withdrawal³
- 52.8 billion cubic feet of natural gas production in 2013²
- 5.7 million acres of land in Texas are irrigated⁴
- 1.2 million acres of land in Texas are in urban areas⁵
- 1.2 million acres of land in Texas are in urban areas⁶

Geoscience in Texas

- 52.8 billion cubic feet of natural gas production in 2013²
- 5.7 million acres of land in Texas are irrigated⁴
- 1.2 million acres of land in Texas are in urban areas⁵
- 1.2 million acres of land in Texas are in urban areas⁶

Geoscience in Texas

- 54,266 geoscience employees (excludes self-employed)¹
- 7.2 billion gallons/day: total groundwater withdrawal³
- 52.8 billion cubic feet of natural gas production in 2013²
- 5.7 million acres of land in Texas are irrigated⁴
- 1.2 million acres of land in Texas are in urban areas⁵
- 1.2 million acres of land in Texas are in urban areas⁶

Geoscience in Texas

- 54,266 geoscience employees (excludes self-employed)¹
- 7.2 billion gallons/day: total groundwater withdrawal³
- 52.8 billion cubic feet of natural gas production in 2013²
- 5.7 million acres of land in Texas are irrigated⁴
- 1.2 million acres of land in Texas are in urban areas⁵
- 1.2 million acres of land in Texas are in urban areas⁶

Geoscience in Texas

- 54,266 geoscience employees (excludes self-employed)¹
- 7.2 billion gallons/day: total groundwater withdrawal³
- 52.8 billion cubic feet of natural gas production in 2013²
- 5.7 million acres of land in Texas are irrigated⁴
- 1.2 million acres of land in Texas are in urban areas⁵
- 1.2 million acres of land in Texas are in urban areas⁶

1. Geoscience employees (excludes self-employed)	54,266
2. Natural gas production (billion cubic feet)	52.8
3. Groundwater withdrawal (billion gallons/day)	7.2
4. Irrigated land (million acres)	5.7
5. Urban land (million acres)	1.2
6. Urban land (million acres)	1.2

Source: U.S. Geological Survey, 2014. Data are preliminary and subject to change. For more information, visit <http://www.gsa.gov>.

By the numbers: Texas

- 54,266 geoscience employees (excludes self-employed)¹
- 7.2 billion gallons/day: total groundwater withdrawal³

- \$5.22 billion: value of nonfuel mineral production in 20174
- 254 total disaster declarations, including 154 fire, 36 flood, and 20 hurricane disasters (1953-2017)?
- \$70.2 million: NSF GEO grants awarded in 201714...

Read more in this Geoscience in Your State Factsheet...

Agencies Working on Geoscience Issues in Texas

Bureau of Economic Geology

<http://www.beg.utexas.edu/>

In addition to functioning as the State Geological Survey of Texas, the Bureau of Economic Geology in the Jackson School of Geosciences conducts research focusing on the intersection of energy, the environment, and the economy, where significant advances are being made tackling tough problems globally. The Bureau partners with federal, state, and local agencies, academic institutions, industry, nonprofit organizations, and foundations to conduct high-quality research and disseminate the results to the scientific and engineering communities as well as to the broad public.

Texas Commission on Environmental Quality

<https://www.tceq.texas.gov/>

The Texas Commission on Environmental Quality strives to protect the state's public health and natural resources consistent with sustainable economic development. Our goal is clean air, clean water, and the safe management of waste.

Texas Division of Emergency Management

<https://tdem.texas.gov/>

The Texas Division of Emergency Management (TDEM) coordinates the state emergency management program, which is intended to ensure the state and its local governments respond to and recover from emergencies and disasters, and implement plans and programs to help prevent or lessen the impact of emergencies and disasters.

Texas State Soil & Water Conservation Board

<https://www.tsswcb.texas.gov/tsswcb-home-page>

The Texas State Soil and Water Conservation Board (TSSWCB) is the state agency that administers Texas' soil and water conservation law and coordinates conservation and nonpoint source water pollution abatement programs throughout the State.

Texas Water Development Board

<http://www.twdb.texas.gov/index.asp>

The mission of the Texas Water Development Board (TWDB) is to provide leadership, information, education, and support for planning, financial assistance, and outreach for the conservation and responsible development of water for Texas.

Maps & Visualizations



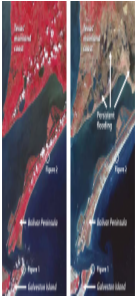
Interactive map of offshore sand and gravel resources of the United States

Bureau of Ocean Energy Management

The Bureau of Ocean Energy Management's Marine Minerals Information System (MMIS) provides an interactive map with information on offshore sand and gravel resources for 18 states on the Atlantic and Gulf coasts of the United States. The system includes: Sand and gravel resources Marine...

Search all Maps & Visualizations [>](#)

Case Studies & Factsheets

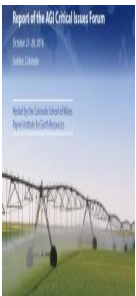


Remote Sensing Enables Assessing Hurricane Damage

Hurricanes bring not only intense rainfall, but also high winds and flooding. This flooding is powered by the hurricane storm surge: a rise in coastal sea level caused by lowered barometric pressure and by wind blowing the ocean onto the land. The result is that waves and currents affect areas that...

Search all Case Studies & Factsheets [>](#)

Webinars & Forums



2016 Critical Issues Forum: Addressing Changes in Regional Groundwater Resources: Lessons from the High Plains Aquifer

The 2016 Critical Issues Forum was a 1-½ day meeting covering multiple aspects of groundwater depletion in the High Plains.

Search all Webinars & Forums [>](#)
