

Search Frequently Asked Questions

Browse topics: [Climate](#) [Energy](#) [Hazards](#) [Mineral Resources](#) [Water](#)

Displaying 21 - 30 of a total of 38 Frequently Asked Questions

Enter your search terms



How much do landslides cost the U.S. in terms of monetary losses?

American Geosciences Institute



What are the different types of landslide hazard maps? What do they mean?

U.S. Geological Survey



What are the natural warning signs for a tsunami?

National Oceanic and Atmospheric Administration



What are underground injection wells used for?

American Geosciences Institute



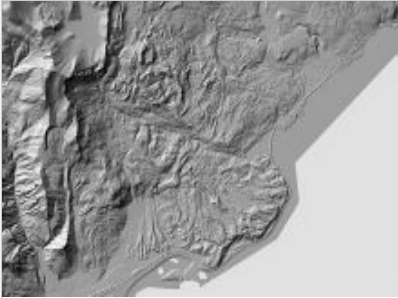
What happens before, during, and after mining?

American Geosciences Institute



What is geoscience?

American Geosciences Institute



What is Lidar and what is it used for?

National Oceanic and Atmospheric Administration



What is the evidence that our present-day climate is changing?

American Geosciences Institute



What is the probability that an earthquake is a foreshock to a larger earthquake?

U.S. Geological Survey

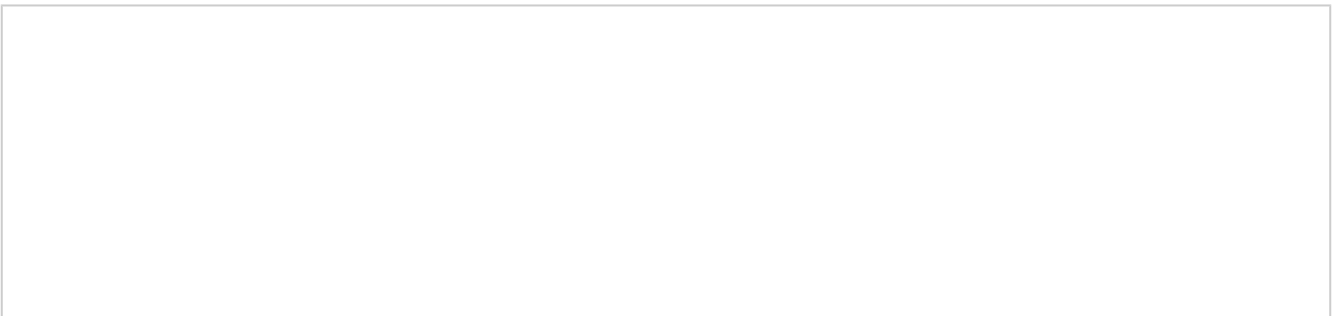


Image not found or type unknown

What kinds of hazards are associated with volcanic eruptions?

American Geosciences Institute

« firstprevious12 3 4next ›last »

Popular Frequently Asked Questions



How many active volcanoes are there in the United States?

U.S. Geological Survey



What are rare earth elements, and why are they important?

U.S. Geological Survey



What are the main methods of mining?

American Geosciences Institute



What are the major sources and users of energy in the United States?

U.S. Energy Information Administration



What are the advantages and disadvantages of offshore wind farms?

American Geosciences Institute