

## Search Maps & Visualizations

Displaying 1 - 34 of a total of 34 maps & visualizations

Enter your search terms



[Interactive database for geologic maps of the United States](#)

U.S. Geological Survey

---



[Interactive database for topographic maps of the United States](#)

U.S. Geological Survey

---



[Interactive drought risk map for the United States](#)

National Drought Mitigation Center

---



[Interactive map of bioenergy potential across the United States](#)

U.S. Department of Energy

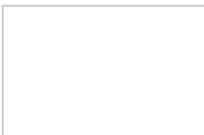
---



[Interactive map of carbon dioxide storage potential in the United States](#)

U.S. Geological Survey

---





[Interactive map of coastal and marine geoscience features in the United States](#)  
National Oceanic and Atmospheric Administration



[Interactive map of coastal change hazards in the United States](#)  
U.S. Geological Survey



[Interactive map of coastal flooding impacts from sea level rise](#)  
National Oceanic and Atmospheric Administration



[Interactive map of drought conditions across the United States](#)  
U.S. Geological Survey



[Interactive map of energy resources in the United States](#)  
U.S. Geological Survey



[Interactive map of flood conditions across the United States](#)  
U.S. Geological Survey



[Interactive map of groundwater monitoring information in the United States](#)  
U.S. Geological Survey



[Interactive map of hazardous waste cleanups in the United States](#)  
U.S. Environmental Protection Agency





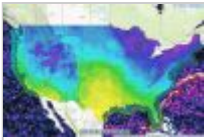
[Interactive map of historical oil and gas production in the United States](#)  
U.S. Geological Survey



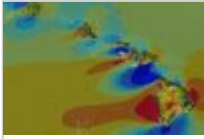
[Interactive map of operating nuclear power reactors in the United States](#)  
U.S. Nuclear Regulatory Commission



[Interactive map of pipelines in the United States](#)  
Pipeline and Hazardous Materials Safety Administration



[Interactive map of real-time and forecast information for coasts and oceans](#)  
National Oceanic and Atmospheric Administration



[Interactive map of renewable energy in Hawaii](#)  
Hawaii State Energy Office



[Interactive map of streams and rivers in the United States](#)  
U.S. Geological Survey



[Interactive map of the United States' geology and natural resources](#)  
U.S. Geological Survey



[Interactive map of thermal springs in the United States](#)  
National Oceanic and Atmospheric Administration





[Interactive map of United States energy infrastructure and resources](#)  
U.S. Energy Information Administration



[Interactive map of volcanoes and current volcanic activity alerts in the United States](#)  
U.S. Geological Survey



[Interactive map of water quality at the state and local level](#)  
U.S. Environmental Protection Agency



[Interactive map of wind farms in the United States](#)  
U.S. Geological Survey



[Map of earthquake probabilities across the United States](#)  
U.S. Geological Survey



[Map of geothermal power generation in each state](#)  
National Renewable Energy Laboratory



[Map of potential geothermal resources across the United States](#)  
National Renewable Energy Laboratory



[Map of the surface geology of Hawaii](#)  
U.S. Geological Survey





Map of wind power capacity in each U.S. state

U.S. Department of Energy



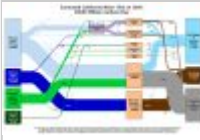
Visualization of average per person energy use for each state

U.S. Department of Energy



Visualization of energy use in every state

Lawrence Livermore National Laboratory



Visualization of water use in every state

Lawrence Livermore National Laboratory



Visualization of water use in the United States

U.S. Geological Survey

## Popular Maps & Visualizations



Interactive map of California earthquake hazard zones

California Geological Survey



Interactive map of fault activity in California

California Geological Survey



Interactive map of coastal flooding impacts from sea level rise

National Oceanic and Atmospheric Administration



Map of earthquake probabilities across the United States

U.S. Geological Survey

---



Interactive map of volcanoes and current volcanic activity alerts in the United States

U.S. Geological Survey

---