

Search Maps & Visualizations

Displaying 1 - 95 of a total of 95 maps & visualizations

Enter your search terms

Search

Reset



Interactive map of groundwater information from around the world
International Groundwater Resources Assessment Centre



Interactive atlas of historical coal mine maps in Pennsylvania
Pennsylvania Department of Environmental Protection



Interactive drought risk map for the United States
National Drought Mitigation Center



Interactive flood planning tool for Delaware
Delaware Department of Natural Resources and Environmental Control



Interactive map of abandoned mines in Virginia
Virginia Division of Geology and Mineral Resources



Interactive map of coal mines in Indiana
Indiana Geological and Water Survey



Interactive map of coastal and marine geoscience features in the United States
National Oceanic and Atmospheric Administration



Interactive map of coastal change hazards in the United States
U.S. Geological Survey

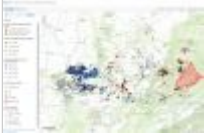




Interactive map of coastal geoscience information in Maryland
Maryland Department of Natural Resources



Interactive map of dams in Nebraska
Nebraska Department of Natural Resources



Interactive map of disposal and injection wells in Kentucky
Kentucky Geological Survey



Interactive map of drought conditions across the United States
U.S. Geological Survey



Interactive map of earth fissures in Arizona
Arizona Geological Survey



Interactive map of environmental information in Minnesota
Minnesota Department of Natural Resources



Interactive map of environmental information in New Hampshire
University of New Hampshire, Earth Systems Research Center



Interactive map of environmental information in New York State
New York State Department of Environmental Conservation



Interactive map of environmental information in West Virginia
West Virginia Department of Environmental Protection



Interactive map of environmental monitoring and management in Utah
Utah Department of Environmental Quality



Interactive map of flood conditions across the United States
U.S. Geological Survey



Interactive map of Florida's geology and natural resources
Florida Geological Survey



Interactive map of geothermal resources and infrastructure in Nevada
Nevada Bureau of Mines and Geology



Interactive map of geothermal resources in the United States
National Renewable Energy Laboratory



Interactive map of geothermal wells and springs in Idaho
Idaho Department of Water Resources



Interactive map of groundwater in Delaware

Delaware Geological Survey



Interactive map of groundwater levels and subsidence in California

California Department of Water Resources



Interactive map of groundwater levels and subsidence in the Houston-Galveston area

U.S. Geological Survey



Interactive map of groundwater levels in Maryland

Maryland Geological Survey



Interactive map of groundwater levels in South Dakota

South Dakota Department of Environment and Natural Resources



Interactive map of groundwater monitoring information in the United States

U.S. Geological Survey



Interactive map of groundwater quality in Idaho

Idaho Bureau of Laboratories



Interactive map of groundwater quality in Kentucky

Kentucky Geological Survey



Interactive map of hazardous waste cleanups in the United States
U.S. Environmental Protection Agency



Interactive map of Kentucky's geology and natural resources
Kentucky Geological Survey



Interactive map of Louisiana's geology and water resources
Louisiana Department of Environmental Quality



Interactive map of managed aquifer recharge projects around the world
International Groundwater Resources Assessment Centre



Interactive map of Massachusetts' geology and natural resources
Massachusetts Bureau of Geographic Information



Interactive map of Michigan's geology and natural resources
Michigan Department of Environment, Great Lakes, and Energy



Interactive map of mineral resources and mines across the United States
U.S. Geological Survey



Interactive map of Missouri's geology and natural resources
Missouri Geological Survey





Interactive map of New England current water conditions

U.S. Geological Survey



Interactive map of New Jersey's geology and natural resources

New Jersey Department of Environmental Protection



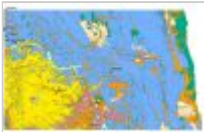
Interactive map of New Mexico's geology and natural resources

New Mexico Bureau of Geology and Mineral Resources



Interactive map of North Carolina's geology and natural resources

North Carolina Geographic Information Coordinating Council



Interactive map of North Dakota's geology and natural resources

North Dakota State Government



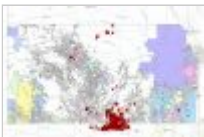
Interactive map of offshore sand and gravel resources of the United States

Bureau of Ocean Energy Management



Interactive map of oil and gas resources in Illinois

Illinois State Geological Survey



Interactive map of oil and gas resources in Kansas

Kansas Geological Survey



Interactive map of oil and gas resources in Nevada
Nevada Bureau of Mines and Geology



Interactive map of oil and gas resources in Utah
Utah Division of Oil, Gas and Mining



Interactive map of oil and gas wells in Indiana
Indiana Geological and Water Survey



Interactive map of oil and gas wells in Ohio
Ohio Geological Survey



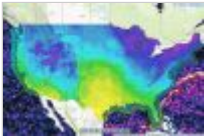
Interactive map of Pennsylvania's geology and natural resources
Pennsylvania Geological Survey



Interactive map of permitted oil and gas wells in Florida
Florida Geological Survey



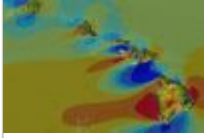
Interactive map of produced waters in the United States
U.S. Geological Survey



Interactive map of real-time and forecast information for coasts and oceans
National Oceanic and Atmospheric Administration



Interactive map of real-time flood information for Texas
U.S. Geological Survey



Interactive map of renewable energy in Hawaii
Hawaii State Energy Office



Interactive map of Rhode Island's geology and natural resources
Rhode Island Department of Environmental Management



Interactive map of sea level rise impacts in Delaware
Delaware Department of Natural Resources and Environmental Control



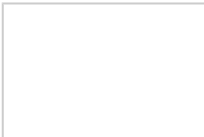
Interactive map of shoreline change rates in Texas
Bureau of Economic Geology



Interactive map of South Dakota's geology and natural resources
South Dakota Geological Survey



Interactive map of spills in South Dakota
South Dakota Department of Environment and Natural Resources





Interactive map of stormwater information in New York State
New York State Department of Environmental Conservation



Interactive map of streams and rivers in the United States
U.S. Geological Survey



Interactive map of surface water quality in North Dakota
North Dakota Department of Environmental Quality



Interactive map of the High Plains Aquifer in Kansas
Kansas Geological Survey



Interactive map of the surface geology of Texas
U.S. Geological Survey

Screenshot of the interactive map of the energy sector's vulnerabilities to climatic conditions

Image not found or type unknown

Interactive map of the U.S. energy sector's vulnerabilities to climatic conditions
U.S. Department of Energy



Interactive map of the United States' geology and natural resources
U.S. Geological Survey



Interactive map of tight oil and shale gas plays in the contiguous United States
U.S. Energy Information Administration



Interactive map of Vermont's geology and natural resources
Vermont Center for Geographic Information



Interactive map of Virginia's geology and natural resources
Virginia Division of Geology and Mineral Resources



Interactive map of Washington's geology and natural resources
Washington Division of Geology and Earth Resources



Interactive map of water and weather conditions in Texas
U.S. Geological Survey



Interactive map of water levels for major reservoirs in California
California Department of Water Resources



Interactive map of water quality assessments in Tennessee
Tennessee Department of Environment and Conservation



Interactive map of water quality at the state and local level
U.S. Environmental Protection Agency



Interactive map of water quality in Wisconsin

Wisconsin Department of Natural Resources



Interactive map of water resources across the United States
U.S. Geological Survey



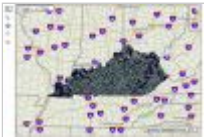
Interactive map of water resources in Georgia
Georgia Soil & Water Conservation Commission



Interactive map of water resources in Oklahoma
Oklahoma Water Resources Board



Interactive map of water use in Wisconsin
Wisconsin Department of Natural Resources



Interactive map of water wells and springs in Kentucky
Kentucky Geological Survey



Interactive map of water wells in Illinois
Illinois State Geological Survey



Interactive map of water wells in Nebraska
Nebraska Department of Natural Resources



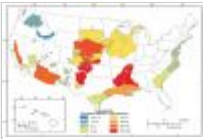
Interactive map of water wells in South Dakota
South Dakota Department of Environment and Natural Resources



Interactive map of well logs in Iowa
Iowa Geological Survey



Interactive maps of global climate information
National Oceanic and Atmospheric Administration



Map of groundwater depletion in the United States
U.S. Geological Survey



Map of potential geothermal resources across the United States
National Renewable Energy Laboratory



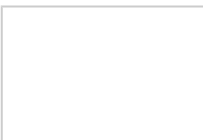
Map of Surficial Aquifer Potential in Connecticut
Connecticut Geological Survey

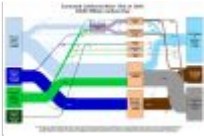


Visualization of a predictive model for weather hazards
National Oceanic and Atmospheric Administration



Visualization of drought in California
U.S. Geological Survey





Visualization of water use in every state

Lawrence Livermore National Laboratory



Visualization of water use in the United States

U.S. Geological Survey

Popular Maps & Visualizations



Interactive map of water levels for major reservoirs in California

California Department of Water Resources



Interactive map of volcanoes and current volcanic activity alerts in the United States

U.S. Geological Survey



Interactive map of United States energy infrastructure and resources

U.S. Energy Information Administration



Interactive map of pipelines in the United States

Pipeline and Hazardous Materials Safety Administration



Interactive map of streams and rivers in the United States

U.S. Geological Survey