

Careers

Meteorology

Snow Survey



© Ron Nichols, NRCS, Image Source: [Earth Science World Image Bank](#)

Weather Surface Forecast Personnel



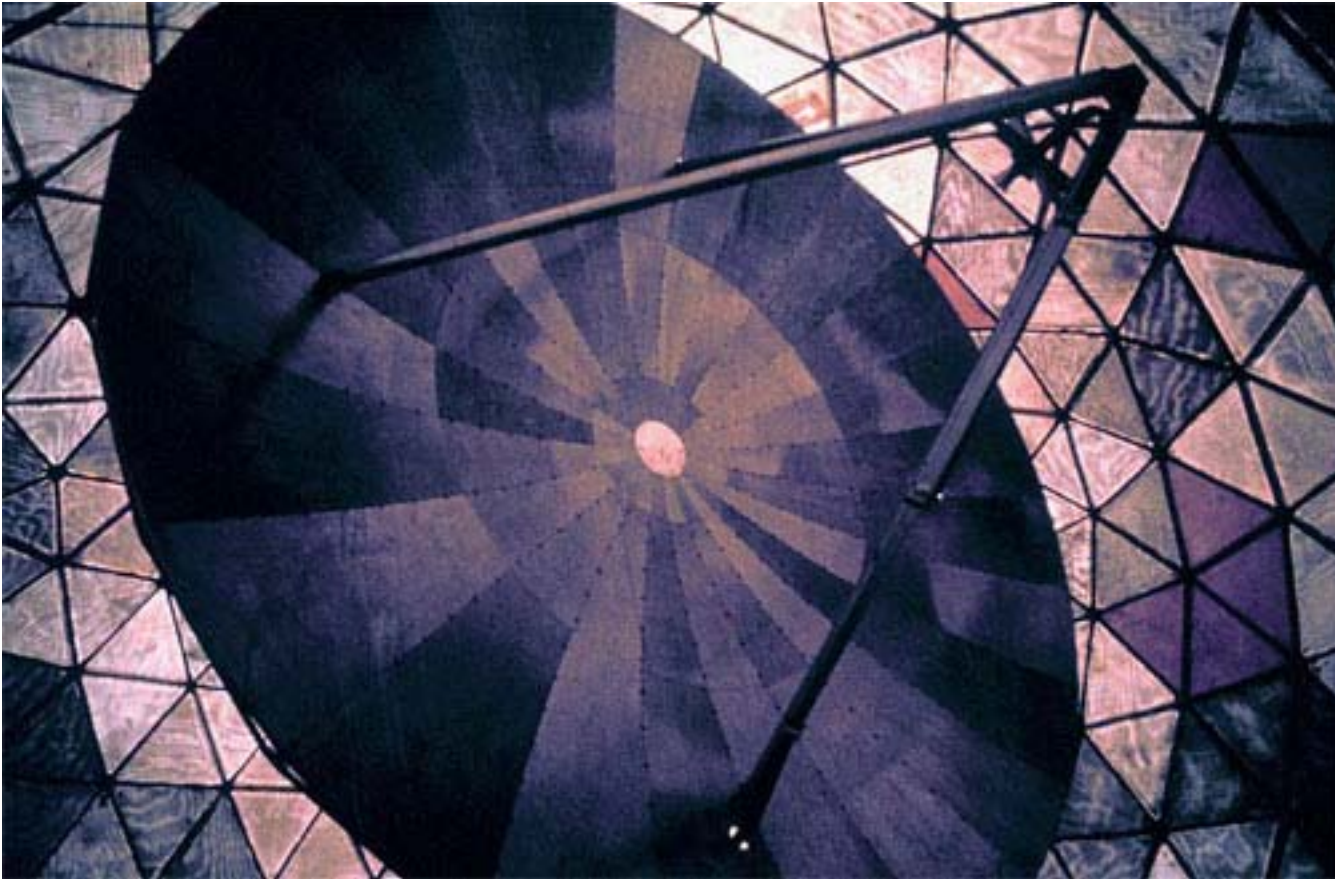
Courtesy NOAA, Image Source: [NOAA Photo Library](#)

Doppler Radar



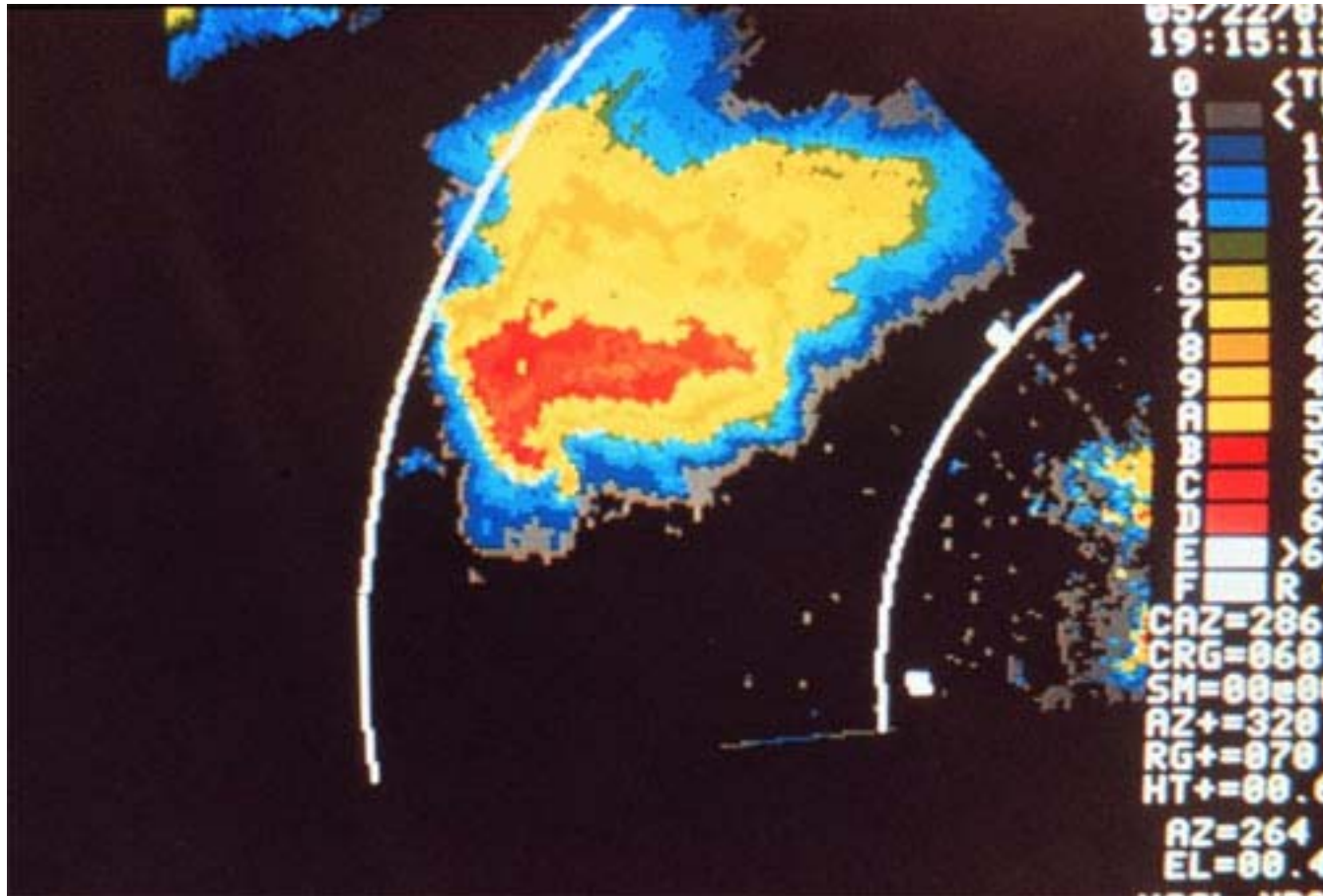
Courtesy NOAA, Image Source: [NOAA Photo Library](#)

Doppler Weather Dish



Courtesy NOAA, Image Source: [NOAA Photo Library](#)

Image from Doppler Radar



Courtesy NOAA, Image Source: [NOAA Photo Library](#)

National Severe Storms Laboratory (NSSL) Mobile Labs



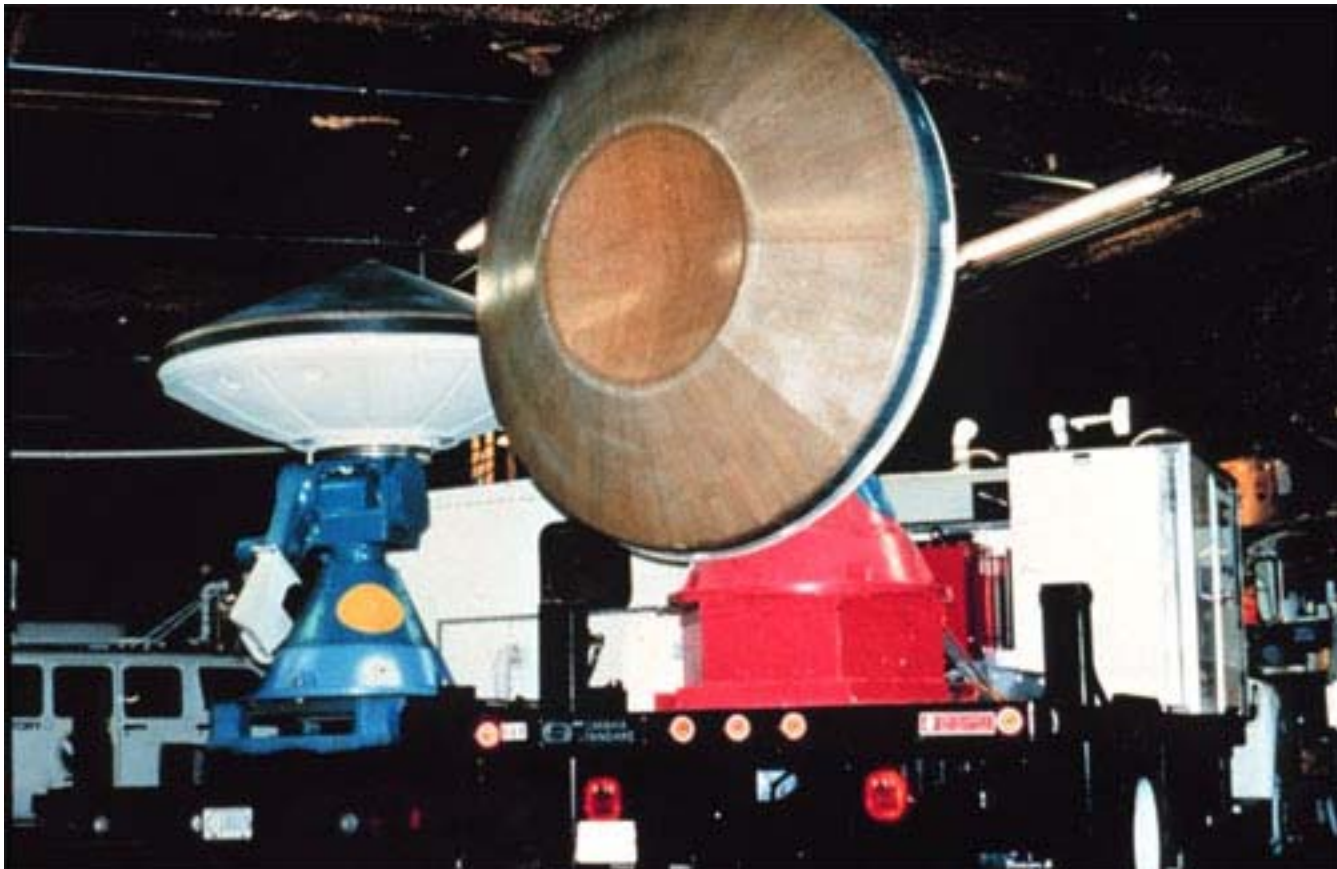
Courtesy NOAA, Image Source: [NOAA Photo Library](#)

Working in the Mobile Lab



Courtesy NOAA, Image Source: [NOAA Photo Library](#)

Mobile Radar for Storm Chasing



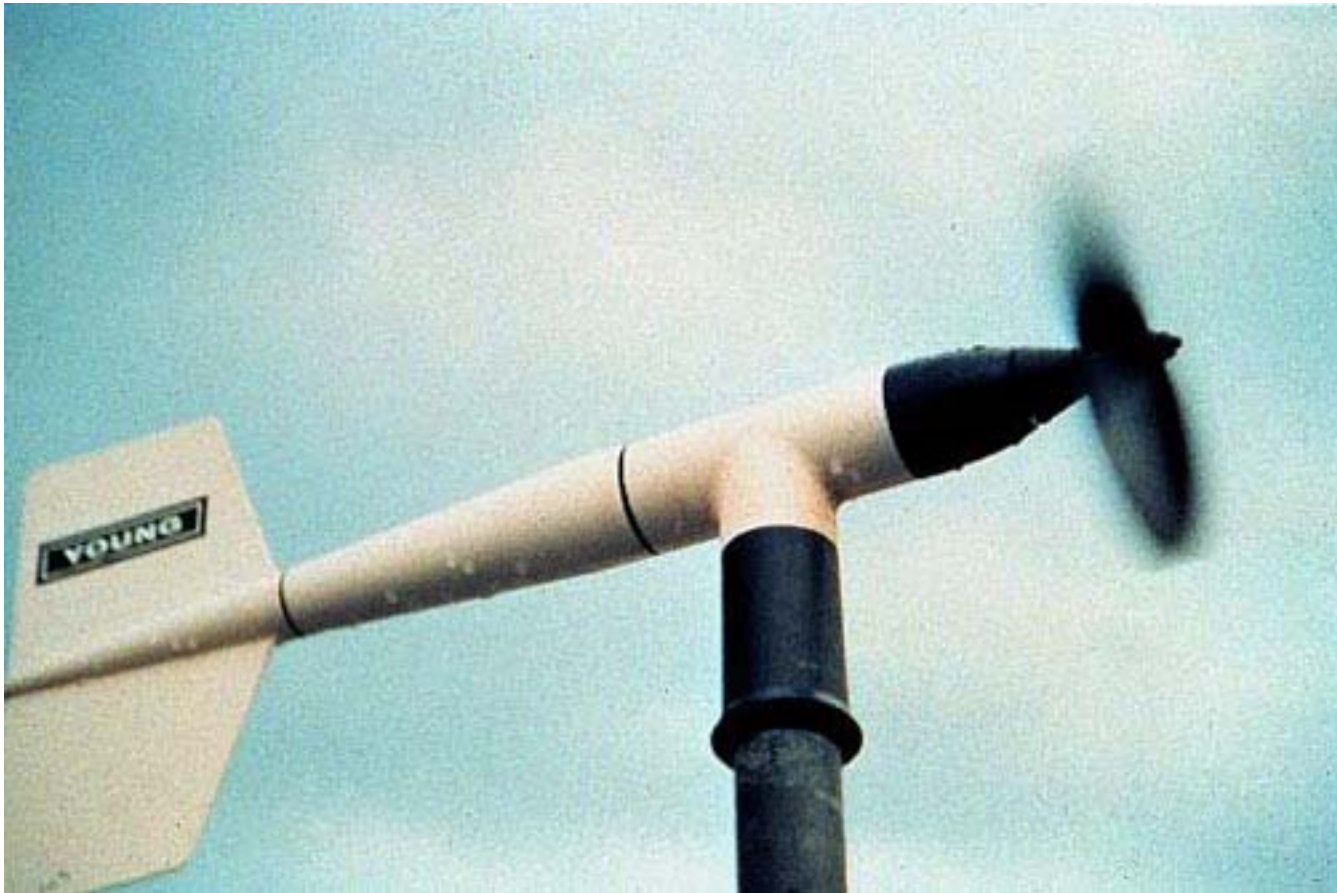
Courtesy NOAA, Image Source: [NOAA Photo Library](#)

Totable Tornado Observatory



Courtesy NOAA, Image Source: [NOAA Photo Library](#)

Wind Speed and Direction Instrument



Courtesy NOAA, Image Source: [NOAA Photo Library](#)

Solar-Powered SAM Site



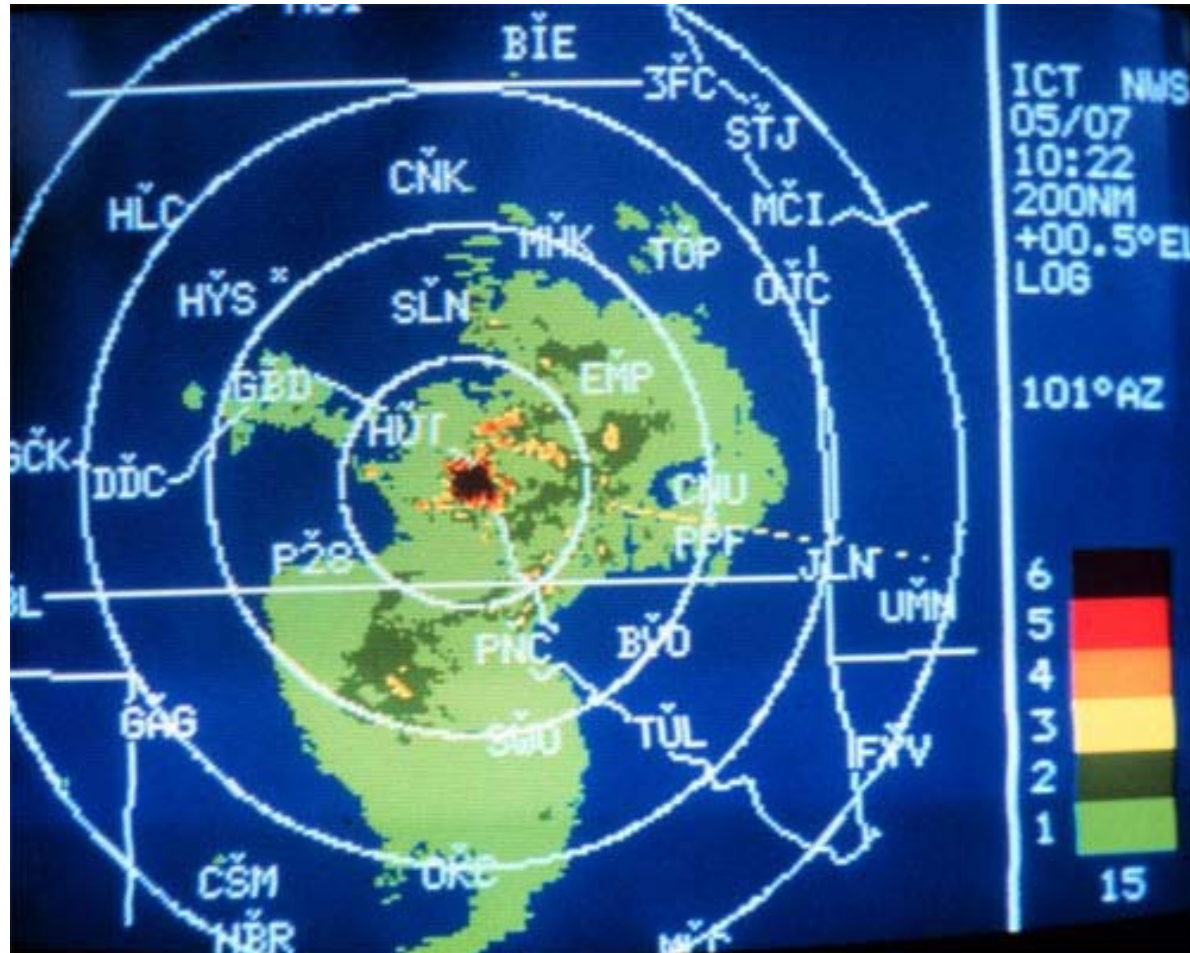
Courtesy NOAA, Image Source: [NOAA Photo Library](#)

Weather Instruments on a TV Tower



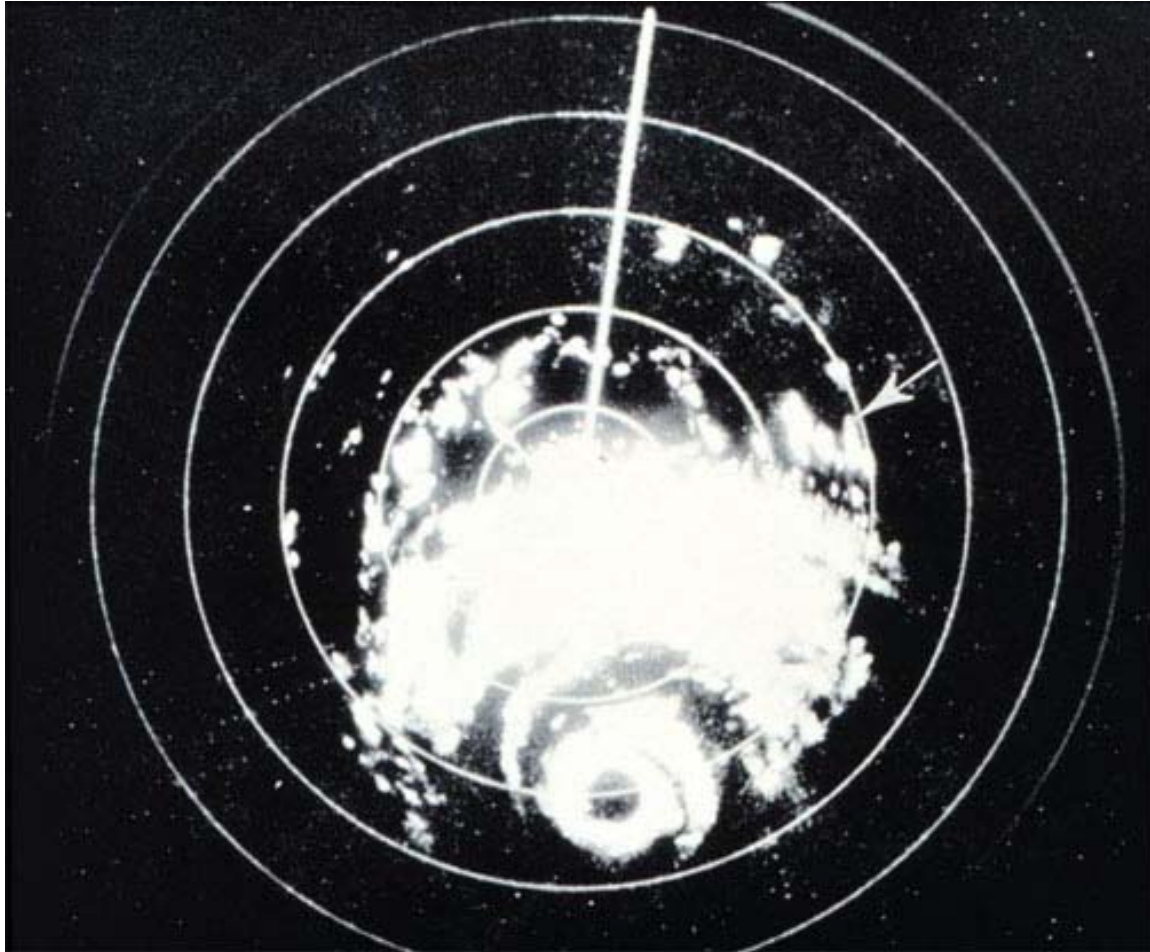
Courtesy NOAA, Image Source: [NOAA Photo Library](#)

Radar



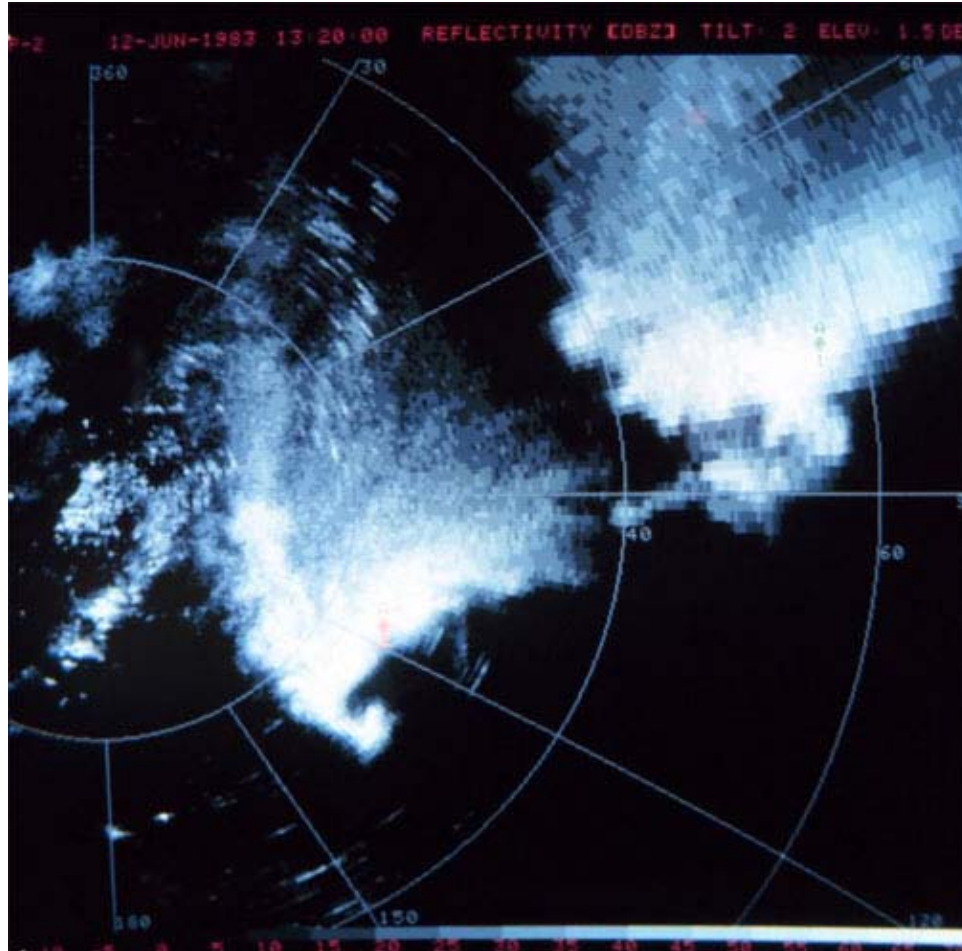
Courtesy NOAA, Image Source: [NOAA Photo Library](#)

Hurricane on Radar



Courtesy NOAA, Image Source: [NOAA Photo Library](#)

Tornado Hook Echo

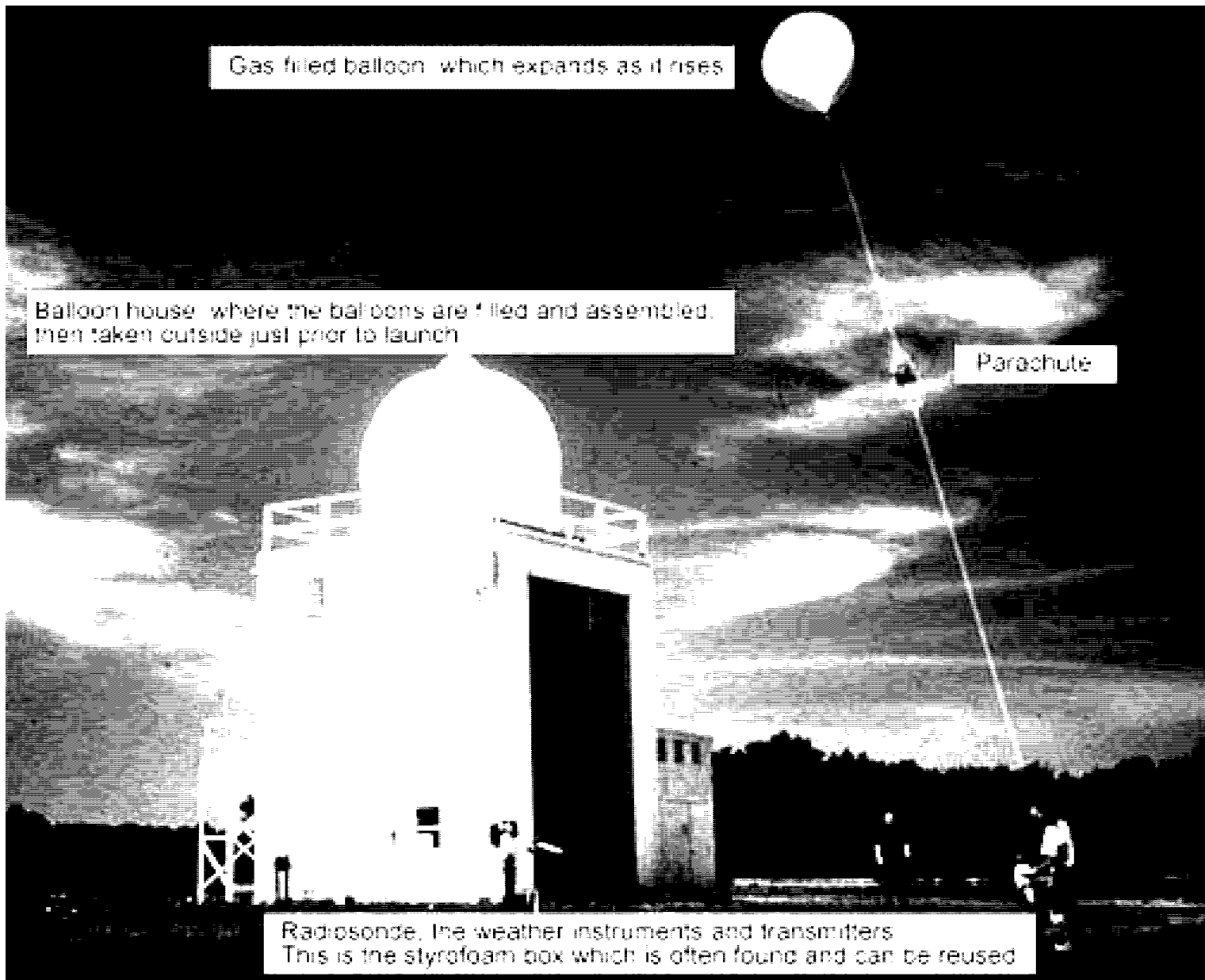


Courtesy NOAA, Image Source: [NOAA Photo Library](#)

Weather Balloons



Courtesy NOAA, Image Source: [NOAA Photo Library](#)



Gas filled balloon which expands as it rises

Balloon house where the balloons are filled and assembled, then taken outside just prior to launch

Parachute

Radioonde, the weather instruments and transmitters
This is the styrofoam box which is often found and can be reused

Weather observers launch weather balloon (site unknown)

The data property of National Weather Service

Careers

Meteorology

Snow Survey



© Ron Nichols, NRCS, Image Source: [Earth Science World Image Bank](#)

Snow Survey measurements by NRCS employees, Jon Werner and Sheila Strachen. Photo taken in 2000.

Weather Surface Forecast Personnel



Courtesy NOAA, Image Source: [NOAA Photo Library](#)

Weather surface forecast office personnel monitoring storm near Oklahoma City.

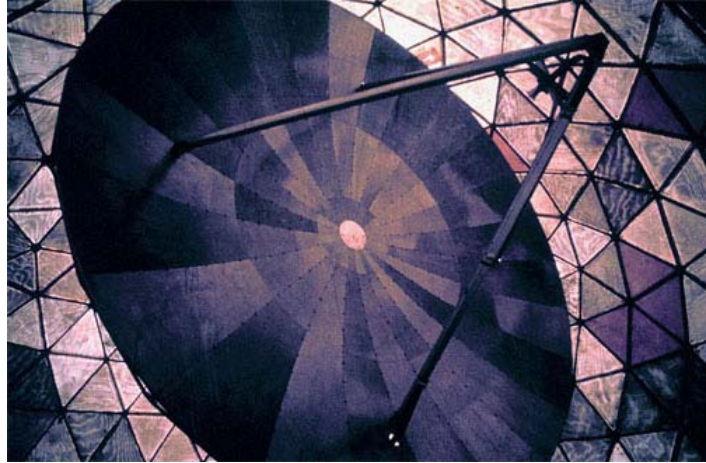
Doppler Radar



Courtesy NOAA, Image Source: [NOAA Photo Library](#)

Doppler radar installation in Oklahoma.

Doppler Weather Dish



Courtesy NOAA, Image Source: [NOAA Photo Library](#)

30 foot diameter dish from the first Doppler weather radar.

National Severe Storms Laboratory (NSSL) Mobile Labs



Courtesy NOAA, Image Source: [NOAA Photo Library](#)

National Severe Storms Laboratory (NSSL) Mobile Laboratories for storm chasing.

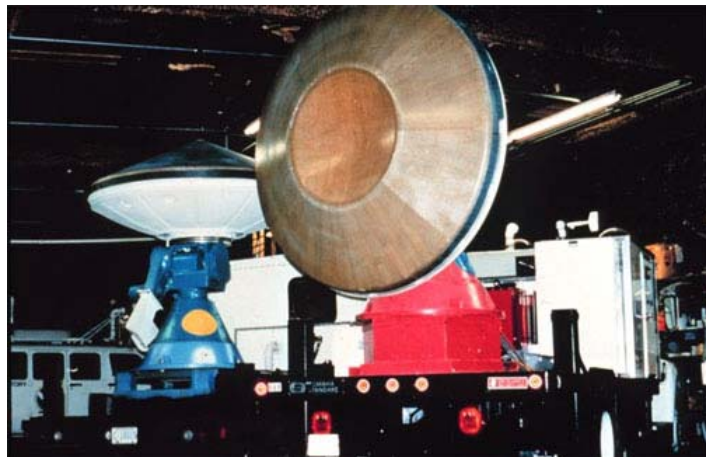
Working in the Mobile Lab



Courtesy NOAA, Image Source: [NOAA Photo Library](#)

NSSL vehicle with computer for processing surface measurements. The video rack displays output from topside camera.

Mobile Radar for Storm Chasing



Courtesy NOAA, Image Source: [NOAA Photo Library](#)

NSSL/University of Oklahoma mobile radar trucks for storm chasing.

Totable Tornado Observatory



Courtesy NOAA, Image Source: [NOAA Photo Library](#)

ToTo (Torable Tornado Observatory) that was used in the 1980's for gathering storm information.

Wind Speed and Direction Instrument



Courtesy NOAA, Image Source: [NOAA Photo Library](#)

Wind speed and direction instrument from Project Vortex.

Solar-Powered SAM Site



Courtesy NOAA, Image Source: [NOAA Photo Library](#)

A solar-powered Surface Automated Measurement (SAM) site. These are deployed to take measurements in and around severe weather. Tower instruments give wind direction and speed; rain gauge on left. White box houses temperature, relative humidity and pressure instruments.

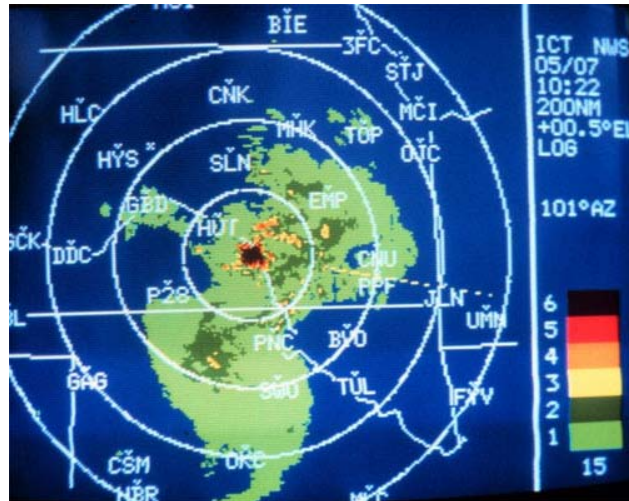
Weather Instruments on a TV Tower



Courtesy NOAA, Image Source: [NOAA Photo Library](#)

NSSL researchers mounted weather instruments on this very tall TV tower. This was the WKY-TV, Oklahoma City, 1602' tower. This tower was used during the 1970's and 1980's.

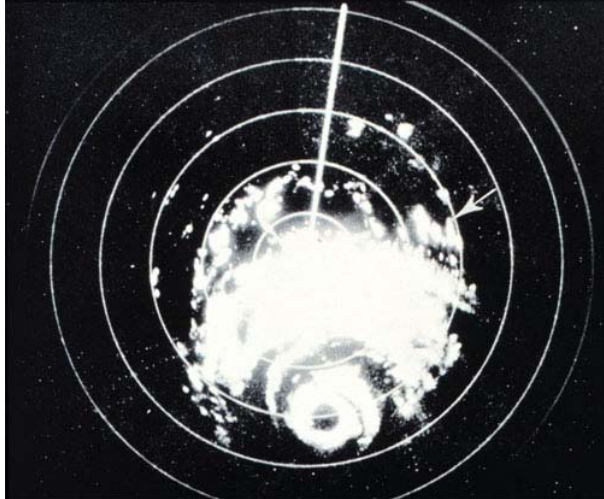
Radar



Courtesy NOAA, Image Source: [NOAA Photo Library](#)

Squally weather passing by the Wichita radar installation. Extending from just south of Topeka to Oklahoma City. No violent weather reported with this squall line.

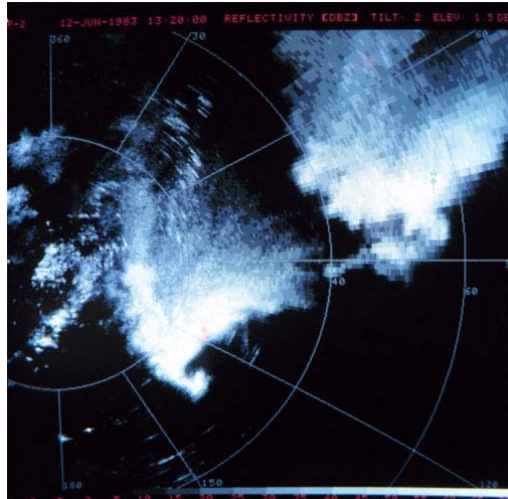
Hurricane on Radar



Courtesy NOAA, Image Source: [NOAA Photo Library](#)

Hurricane Carla as seen by WSR-57 radar at Galveston, Texas. Arrow designates location of tornado which occurred near Kaplan, Louisiana. Monthly Weather Review, December 1962, p. 515.

Tornado Hook Echo



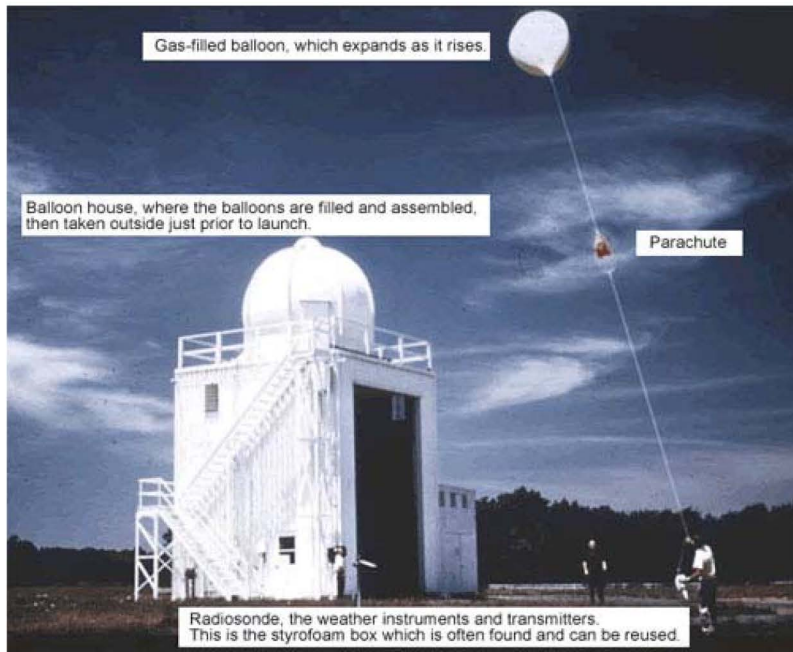
Courtesy NOAA, Image Source: [NOAA Photo Library](#)

Classic appearing tornado hook echo on bottom of thunderstorm in lower left quadrant of scope. Apparently a storm in eastern Colorado or southwest Nebraska as Storm Data shows tornadoes only in that area on given date.

Weather Balloons



Courtesy NOAA, Image Source: [NOAA Photo Library](#)



Gas-filled balloon, which expands as it rises.

Balloon house, where the balloons are filled and assembled, then taken outside just prior to launch.

Parachute

Radiosonde, the weather instruments and transmitters.
This is the styrofoam box which is often found and can be reused.

Weather observers launch weather balloon (site unknown).

This photo property of National Weather Service.