

# Weather

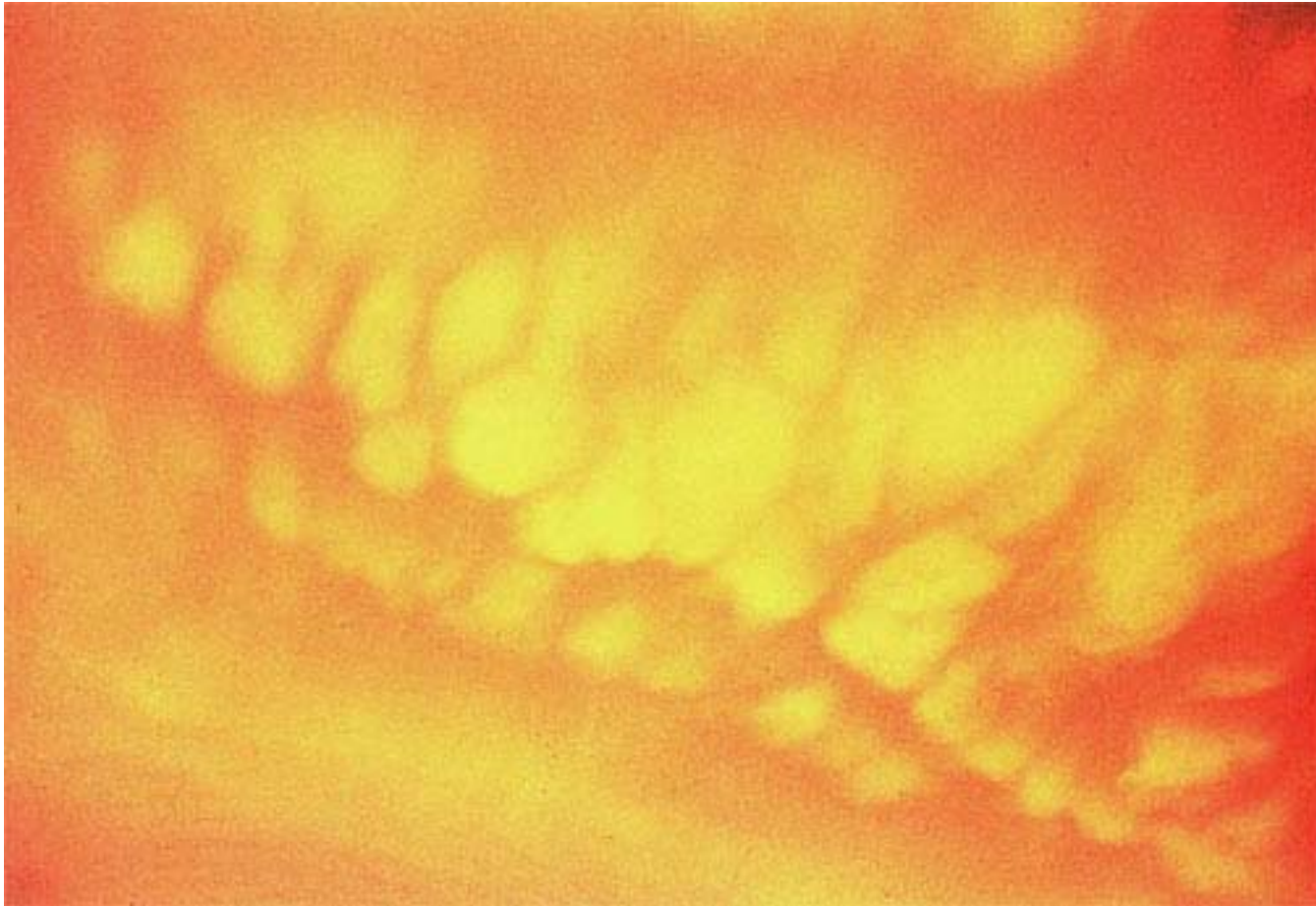
## Thunderstorms

# Mammatus Clouds



Courtesy National Oceanic and Atmospheric Administration, Image Source: [Earth Science World Image Bank](#)

# Globular Mammatus Clouds



Courtesy National Oceanic and Atmospheric Administration, Image Source: [Earth Science World Image Bank](#)

# Storm Clouds



© Bruce Molnia, Terra Photographics, Image Source: [Earth Science World Image Bank](#)

# Cumulonimbus Thunderstorms



Courtesy National Oceanic and Atmospheric Administration, Image Source: [Earth Science World Image Bank](#)

# Lightning



Courtesy National Oceanic and Atmospheric Administration, Image Source: [Earth Science World Image Bank](#)

# Lightning



Courtesy National Oceanic and Atmospheric Administration, Image Source: [Earth Science World Image Bank](#)

# Lightning



Courtesy National Oceanic and Atmospheric Administration, Image Source: [Earth Science World Image Bank](#)



# Night Storm



Courtesy National Oceanic and Atmospheric Administration, Image Source: [Earth Science World Image Bank](#)

Weather

Thunderstorms

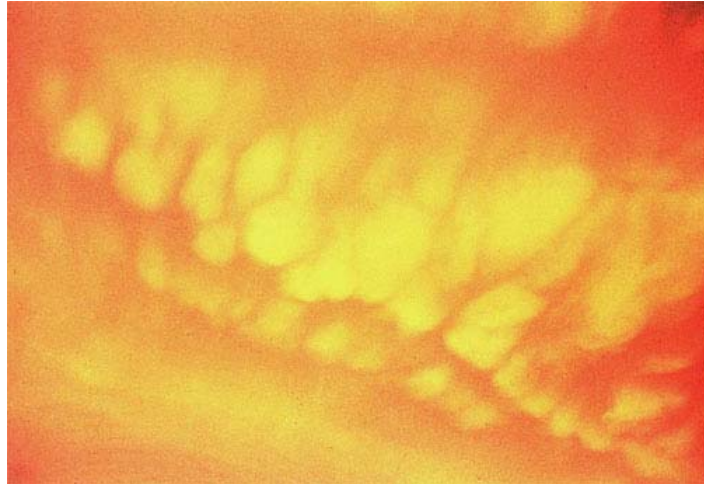
# Mammatus Clouds



Courtesy National Oceanic and Atmospheric Administration, Image Source: [Earth Science World Image Bank](#)

Mammatus clouds that are usually associated with thunderstorms. Image taken in 1973.

# Globular Mammatus Clouds



Courtesy National Oceanic and Atmospheric Administration, Image Source: [Earth Science World Image Bank](#)

Globular mammatus clouds associated with thunderstorms, taken in 1970.

# Storm Clouds



© Bruce Molnia, Terra Photographics, Image Source: [Earth Science World Image Bank](#)

Storm clouds in the Gulf of Alaska.

# Cumulonimbus Thunderstorms



Courtesy National Oceanic and Atmospheric Administration, Image Source: [Earth Science World Image Bank](#)

Cumulonimbus thunderstorms in their early stage of development.

# Lightning



Courtesy National Oceanic and Atmospheric Administration, Image Source: [Earth Science World Image Bank](#)

Cloud to ground and cloud to cloud lightning during a night thunderstorm.

# Lightning



Courtesy National Oceanic and Atmospheric Administration, Image Source: [Earth Science World Image Bank](#)

Norman Oklahoma cloud to ground lightning at night.



# Lightning



Courtesy National Oceanic and Atmospheric Administration, Image Source: [Earth Science World Image Bank](#)

Cloud to ground lightning during a storm chase in 1980.

# Night Storm



Courtesy National Oceanic and Atmospheric Administration, Image Source: [Earth Science World Image Bank](#)

Cloud to ground lightning during a night storm.