



Soil Compaction Activity Sheet



Who made that path? Why isn't any grass growing?

(Remember the sponge and soil activity.)



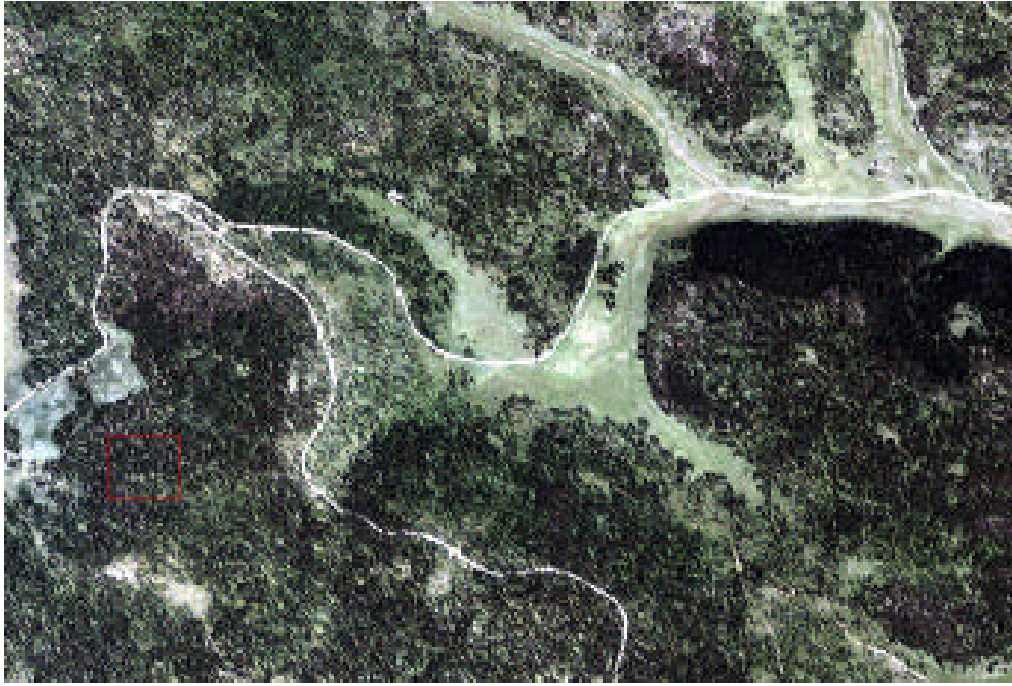
What happened to the plants behind the fence?



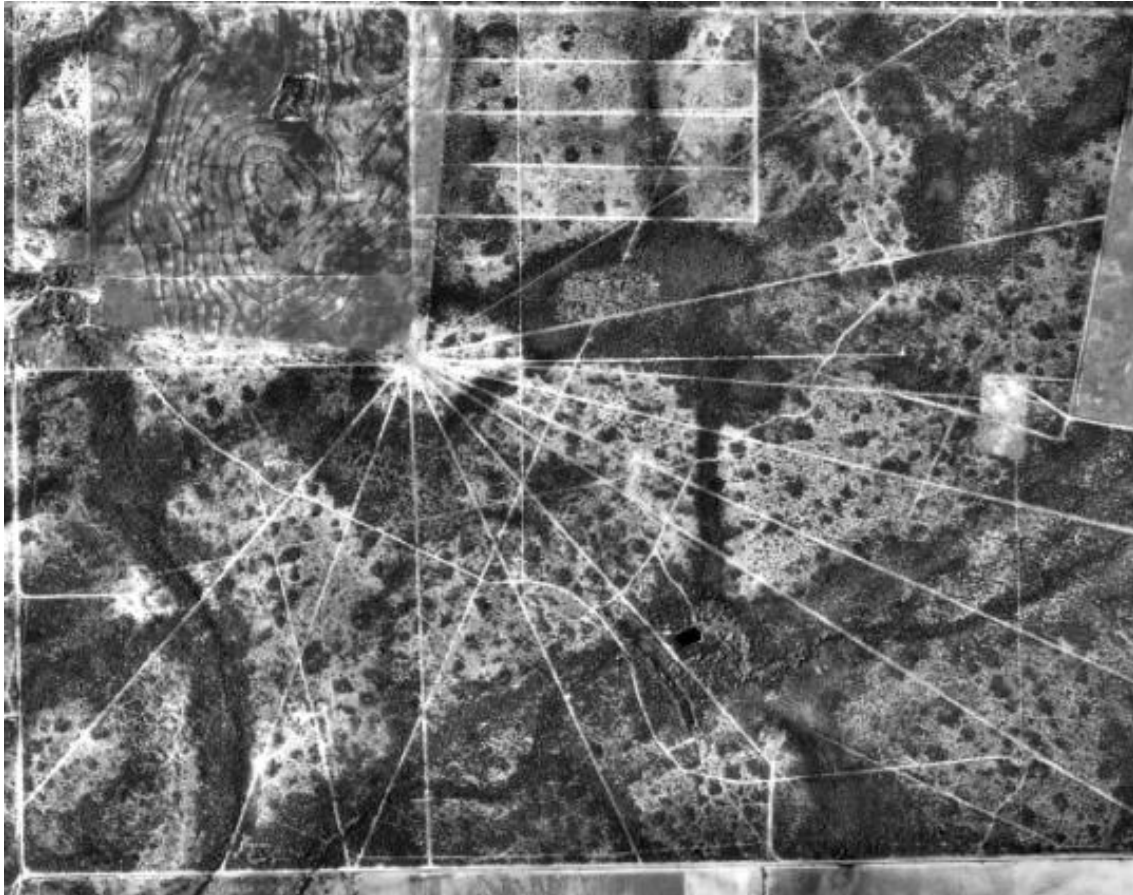
When soil gets compressed many times, it can take a long, long time for it to recover. The tracks in the ground were made 150 years ago by covered wagons. What will our roads look like in 150 years?



Plants don't grow well on roads. This picture was taken from a hot air balloon. Do you see plants? Do you see paths and roads?



This image was taken by a satellite hundreds of kilometers above the earth. Can you see roads in the forest?



This picture of a cow pasture was taken from an airplane. Cows like to make paths along fences. Can you tell where the fences are? It looks like the cows are all heading in toward one spot - do you have any ideas on what might be there?