

Paper Number: 1318

Regional interpretation of seismic horizons along the east coast of South Africa

Daivs, S¹, Buthulezi, T.M., Fielies, A. and Salomo, J.

¹Petroleum Agency SA, 7 Mispel Road, Bellville, 7535, davidss@petroleumagency.com

The Petroleum Agency SA Resource Management Division is conducting regional studies within the east coast of South Africa. The East Coast Basin Analysis (ECBA) project includes the Zululand basin, the Durban basin, the deepwater Natal valley and to a lesser extent the Transkei swell. This is a large geographical area which covers more than 195 000km² and with water depths reaching more than 6000m (Fig1).

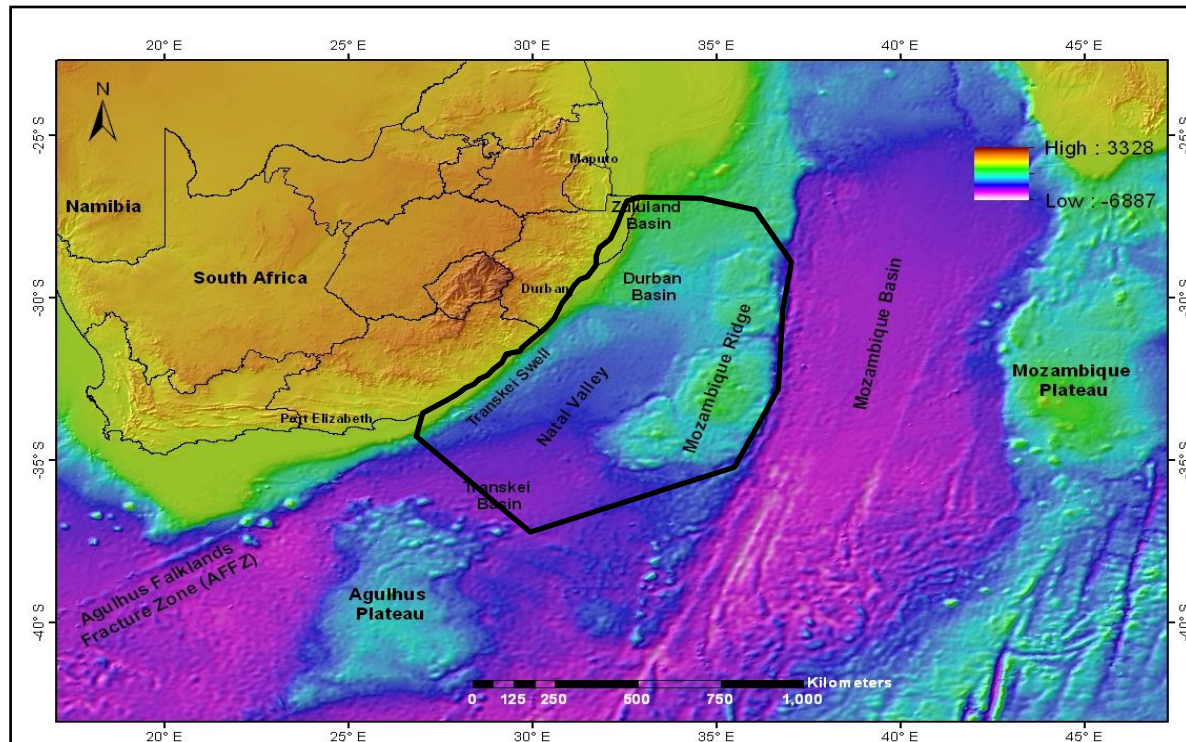


Figure 1: The ECBA project area offshore South Africa

The interest in the east coast of Africa is spearheaded by the activities within Mozambique, Tanzania & Kenya. Numerous hydrocarbon discoveries have been made and this in turn will forever change the economic outlook of these countries. South Africa has seen a similar increase in interest along the east coast. Majors ExxonMobil, Eni, Sasol and others have licences within the region and are actively working the area.

New proprietary offshore seismic data has provided some interesting ideas of sediment source and basin architecture. New depth surfaces maps of selected seismic unconformities and isopach units display packages within potential hydrocarbon areas.

