



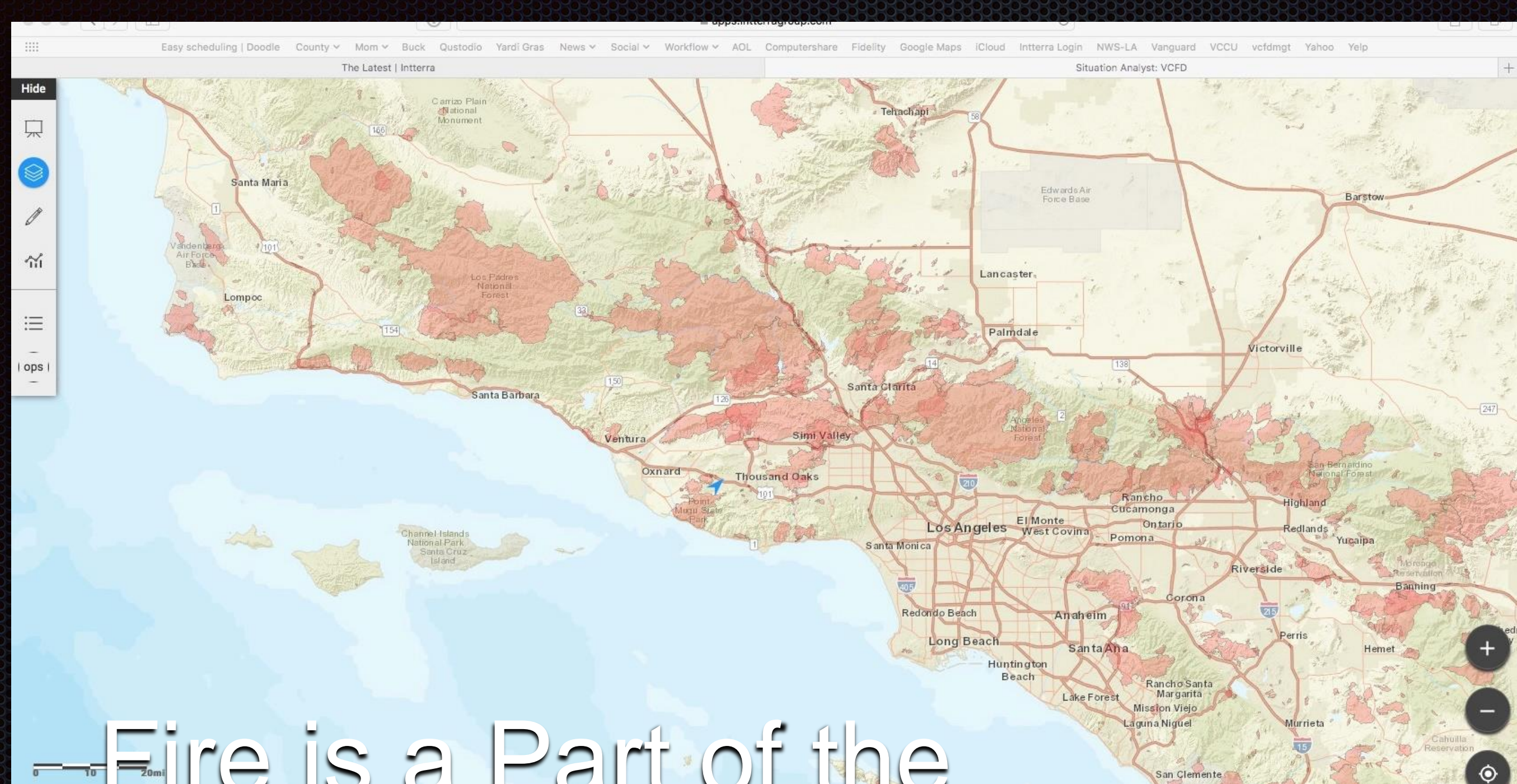
A Look at the Thomas Fire

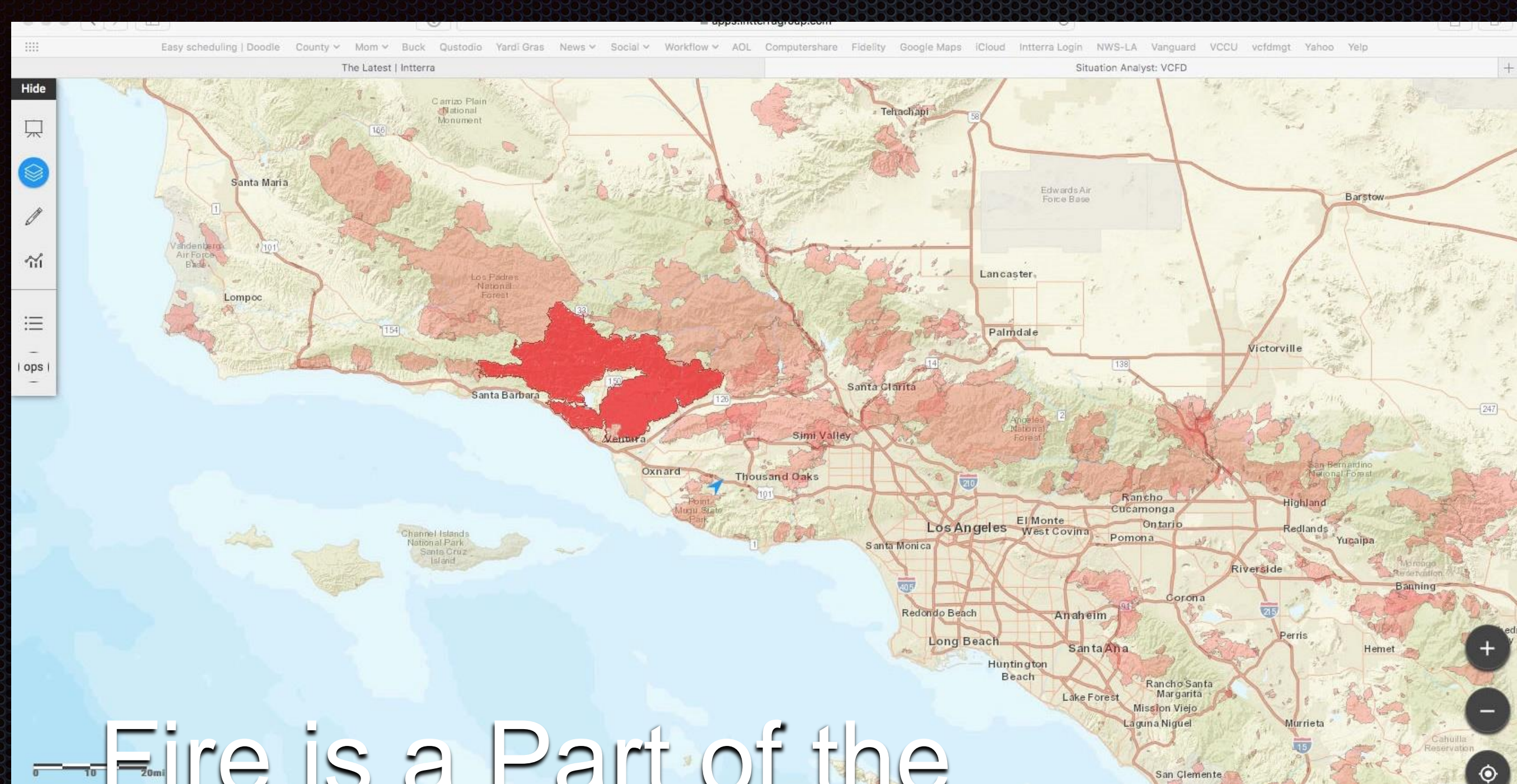
Ventura County Operational Area

480 Square Miles

830,000 People







Fire is a Part of the
Landscape

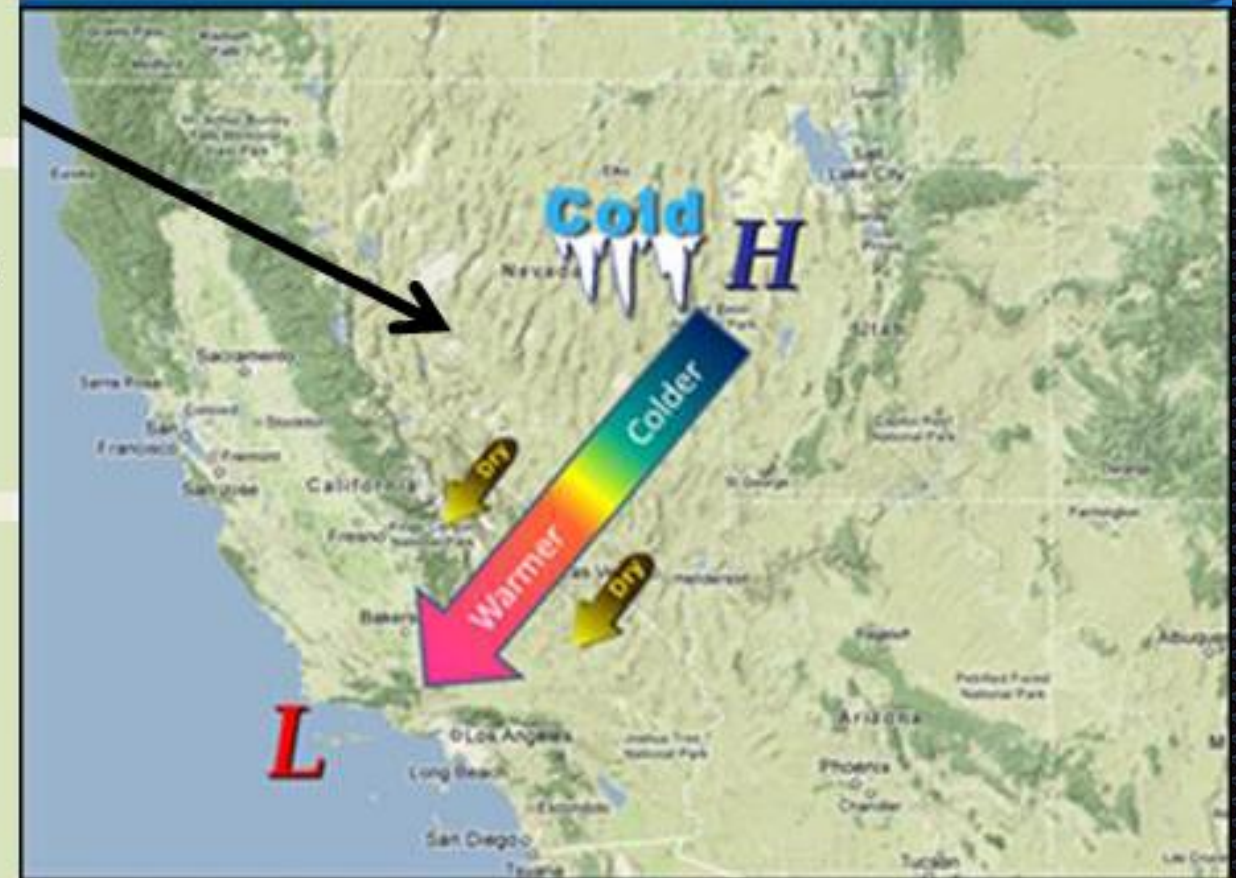
What Drives a Santa Ana Wind?

1. High surface pressure builds over the Great Basin region with lower pressure off Southern Cal Coast. (Fall-mid Spring)

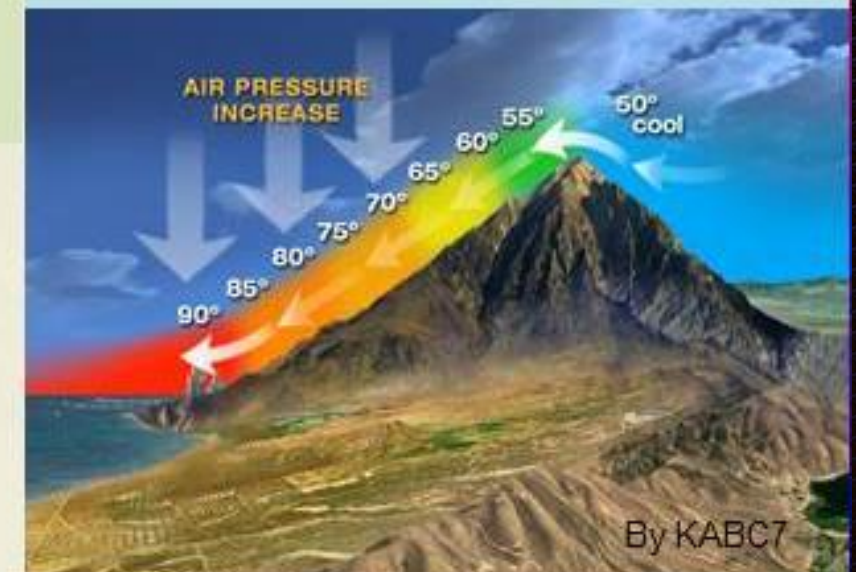
2. Air remains relatively cold across the deserts. As the air extends through the mountain passes...it become compressed and warms. (See lower right map) Lower relative humidity also occurs helping to dry out vegetation and can fan any existing fires.

3. Wind speed increases as it squeezes through the mountain and valley canyons. Wind gusts can vary from 45 to 100 mph depending on the strength of the Santa Ana event.

4. Strong winds create turbulence for area flights and can make interstate travel difficult as well as choppy seas for mariners.



Cross Section over the Los Angeles and Ventura County Mountains to the Pacific Ocean



Source: National Weather Service

By KABC7

Largest Wildfires in California

1. **Thomas - Ventura**
2. Cedar - San Diego Co.
3. Rim - Tuolumne
4. Zaca - Santa Barbara
5. **Matilija- Ventura**
6. Witch - San Diego
7. Klamath TC - Siskiyou
8. Marble Cone - Monterey
9. Laguna - San Diego
10. Basin - Monterey
11. **Day - Ventura**



Wildland Fire Metrics

2016

- 170 - Total Responses
- 6 - Over 10 Acres

2017

- 139 - Total Responses
- 4 - Over 10 Acres



Ventura County Operational Area

10 Cities

5 Law Enforcement
Agencies

3 Ambulance Companies

Los Padres Forest

CAL-Fire SRA

State Parks

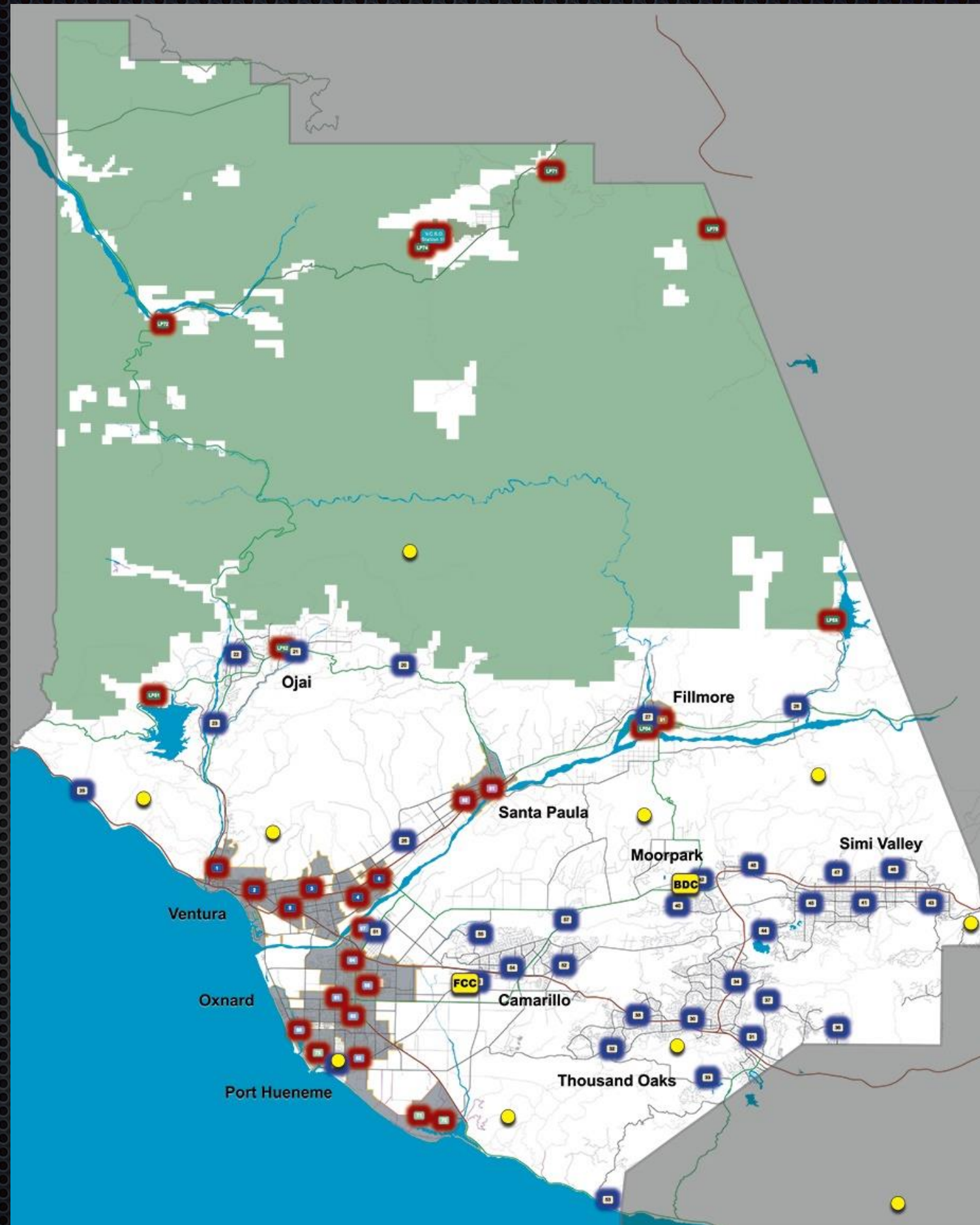
National Parks

Naval Air Station

Condor Refuge

2 Harbors

1 Deep Water Port



Ventura County Operational Area

Thomas Fire Footprint



Pre-Fire Season Activities

Fire Hazard Reduction Program

- Since 1928
- 100' clearance from structures
- 16,000+ parcels
- 100% compliance



Pre-Season Coordination

Fire Training

Law Enforcement
Training

Office of
Emergency
Services

Public Events



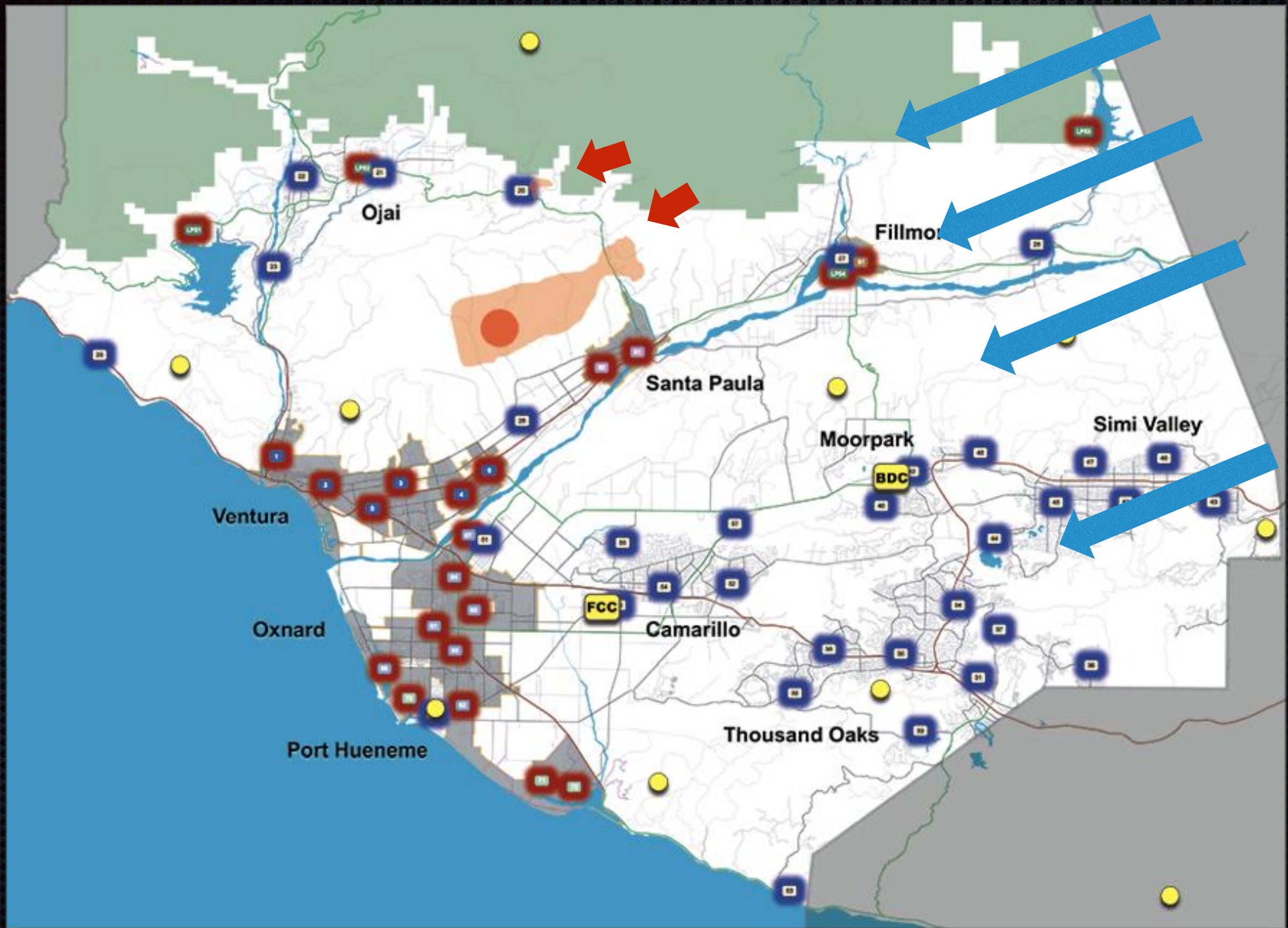
We knew the risks were HIGH...

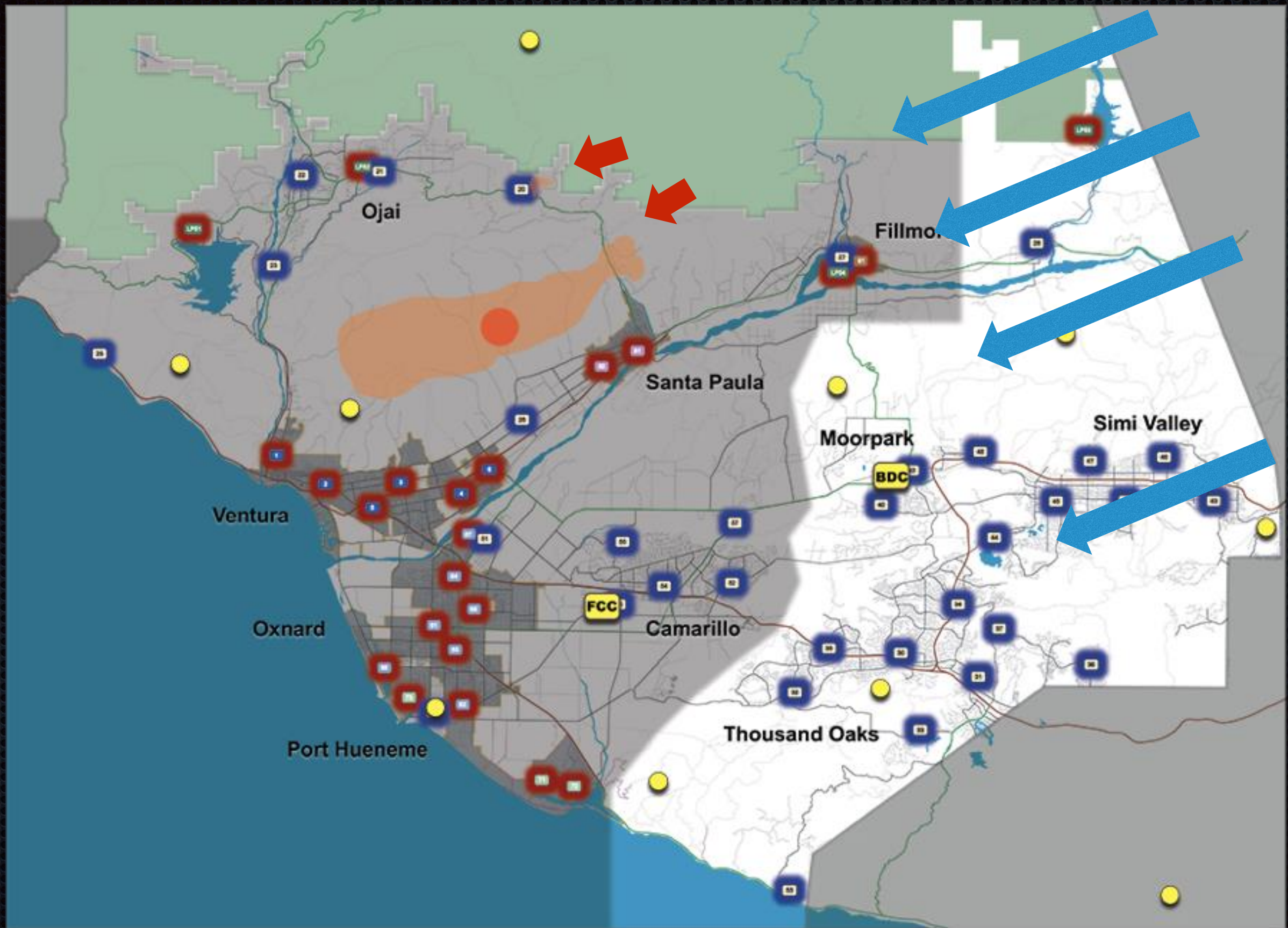
Monday, December 4, 2017

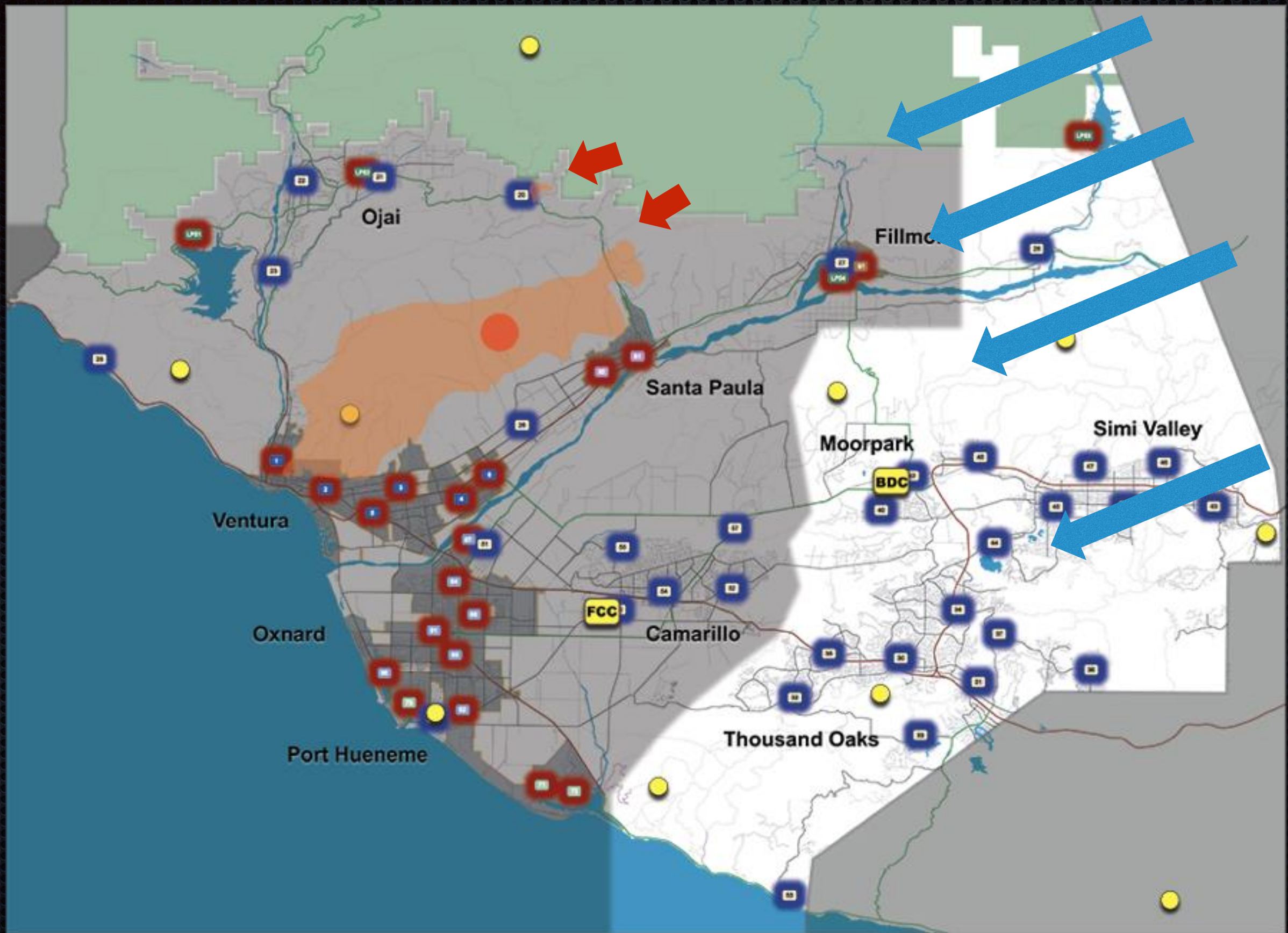
First call comes in at 6:24 p.m.





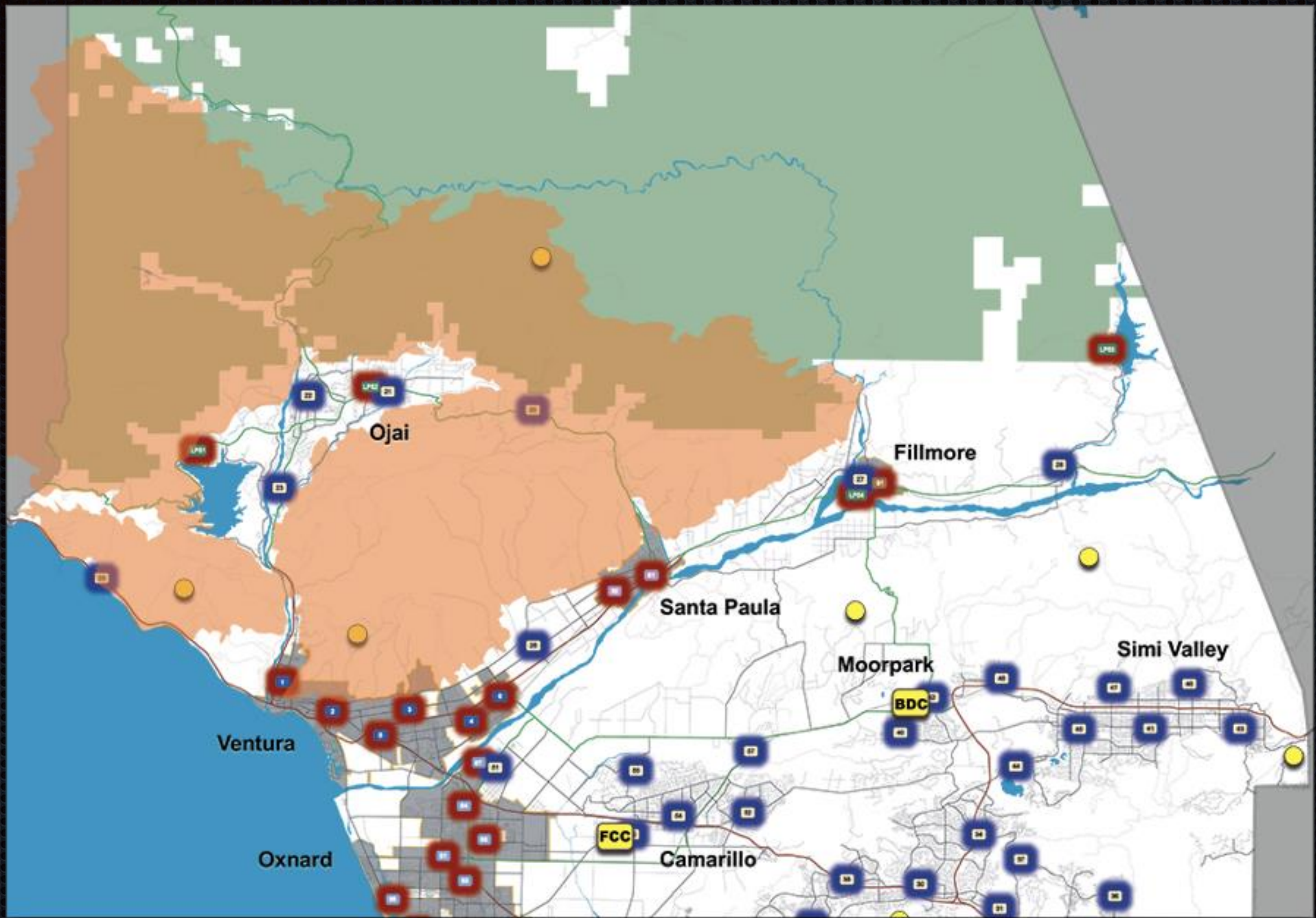












Final Perimeter 281,893 Acres

Notification(s) Evacuations

- 64 VC-Alerts
165,284 people
- 31 Evacuations
90,000-People



18,000 Structures Threatened



1,343 Damaged or Destroyed

Damage Estimates



Public Infrastructure: \$70 Million
Private: \$1 - \$2.5 Billion

Fallen Firefighter

Lost in the Line of Duty

CORY D. IVERSON

- 8-Year Veteran Firefighter
- CAL FIRE San Diego
- December 14, 2017





Montecito Mudslide

Looking forward



- Relationships matter
- Respond with more resources faster than ever
- Share information immediately, everywhere
- Improve alert messaging
- Enhance public/ private partnerships