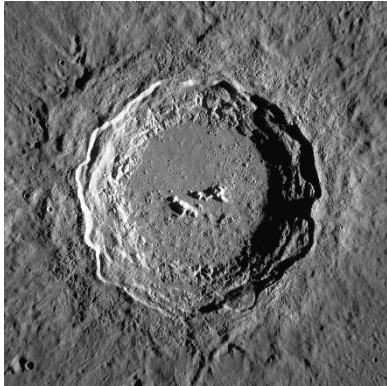


Copernicus Crater



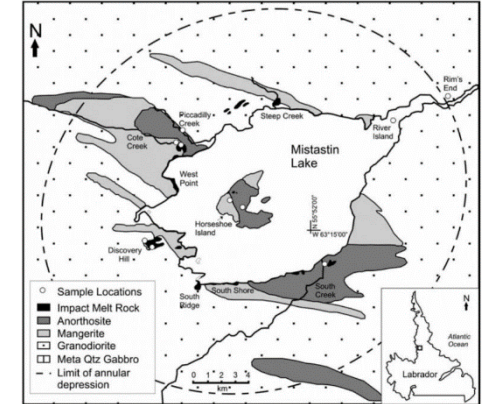
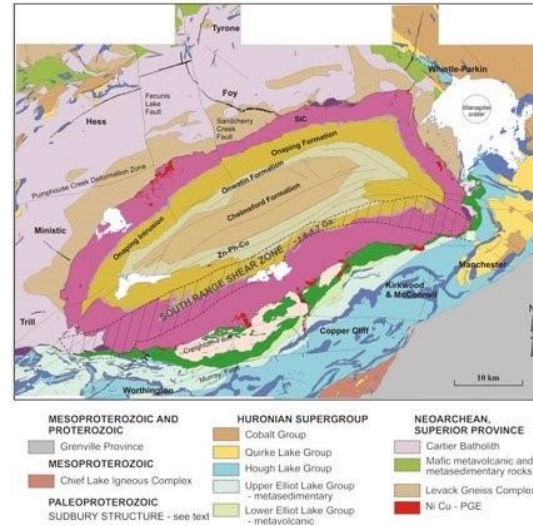
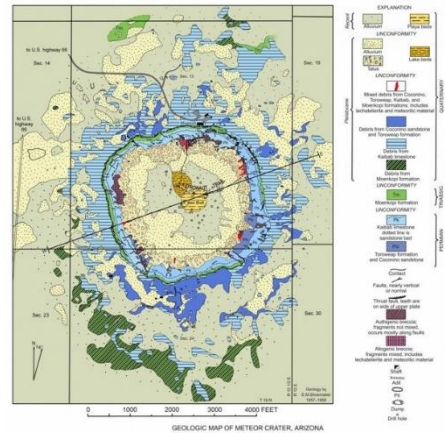
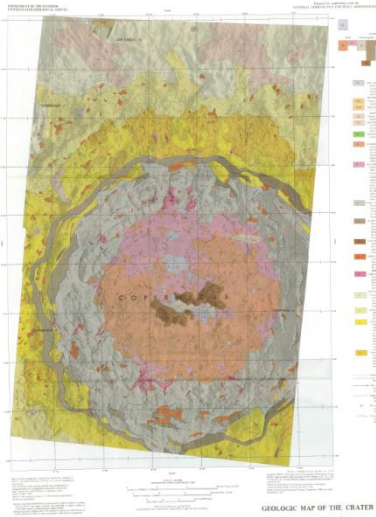
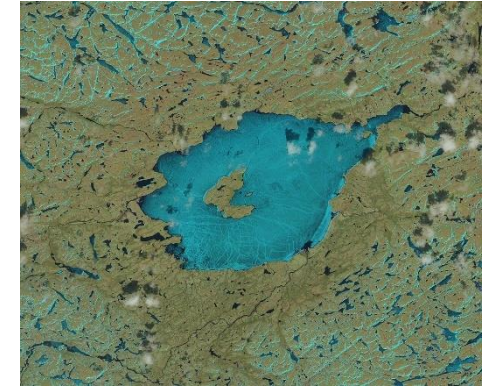
Meteor Crater



Sudbury Basin



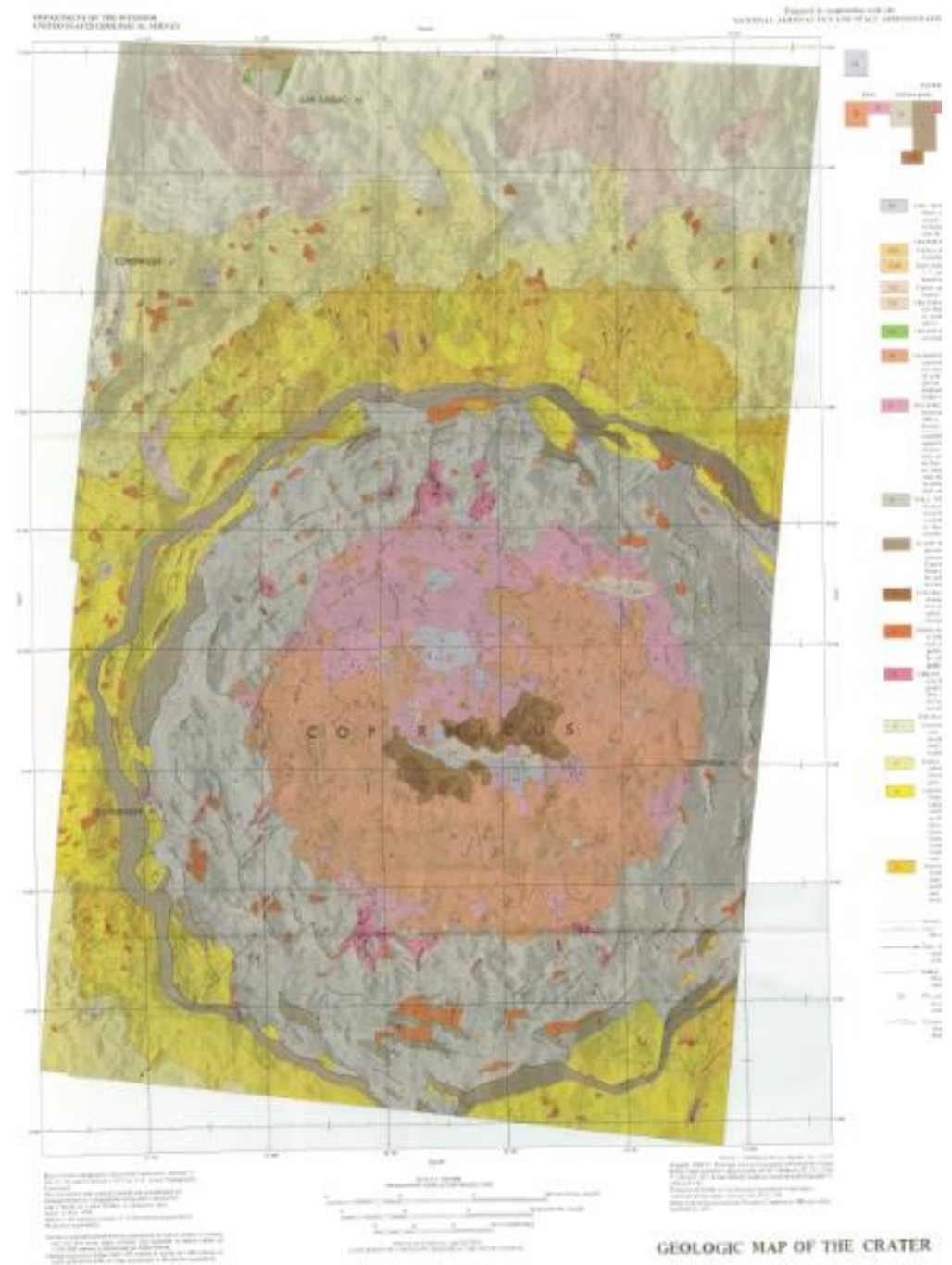
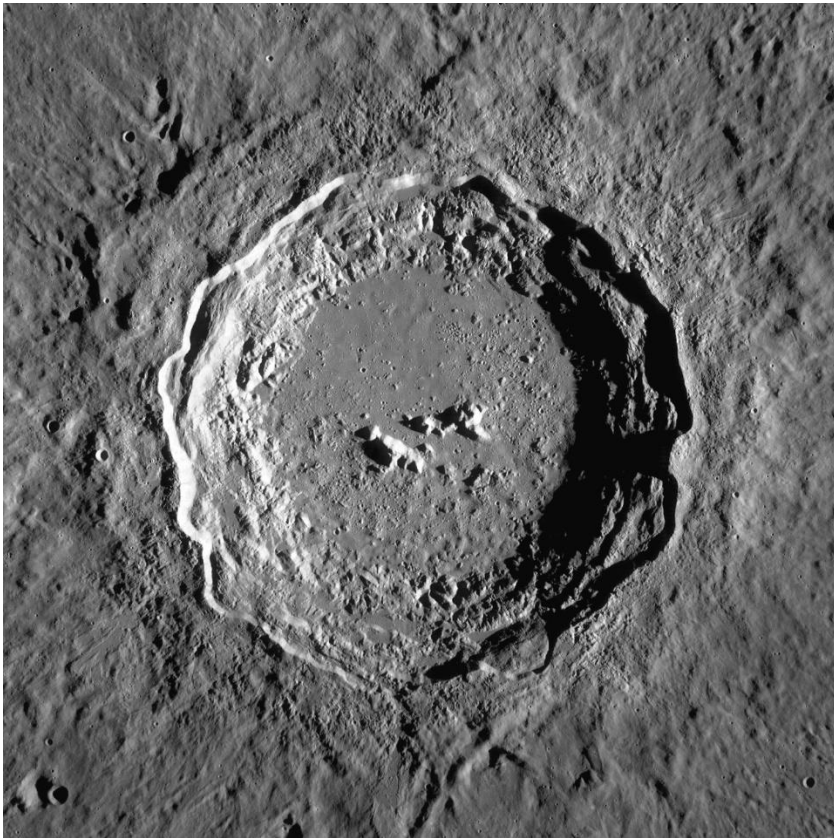
Mistastin Lake



- | | | |
|--|---|--|
| MESOPROTEROZOIC AND PROTEROZOIC | HURONIAN SUPERGROUP | NEOARCHAIC, SUPERIOR PROVINCE |
| ■ Grenville Province | ■ Cobalt Group | ■ Carlier Batholith |
| MESOPROTEROZOIC | ■ Quirke Lake Group | ■ Mafic metavolcanic and metasedimentary rocks |
| ■ Chief Lake Igneous Complex | ■ Hough Lake Group | ■ Levack Gneiss Complex |
| PALEOPROTEROZOIC | ■ Upper Elliot Lake Group - metasedimentary | ■ Ni-Cu-PGE |
| SUDBURY STRUCTURE - see text | ■ Lower Elliot Lake Group - metavolcanic | |

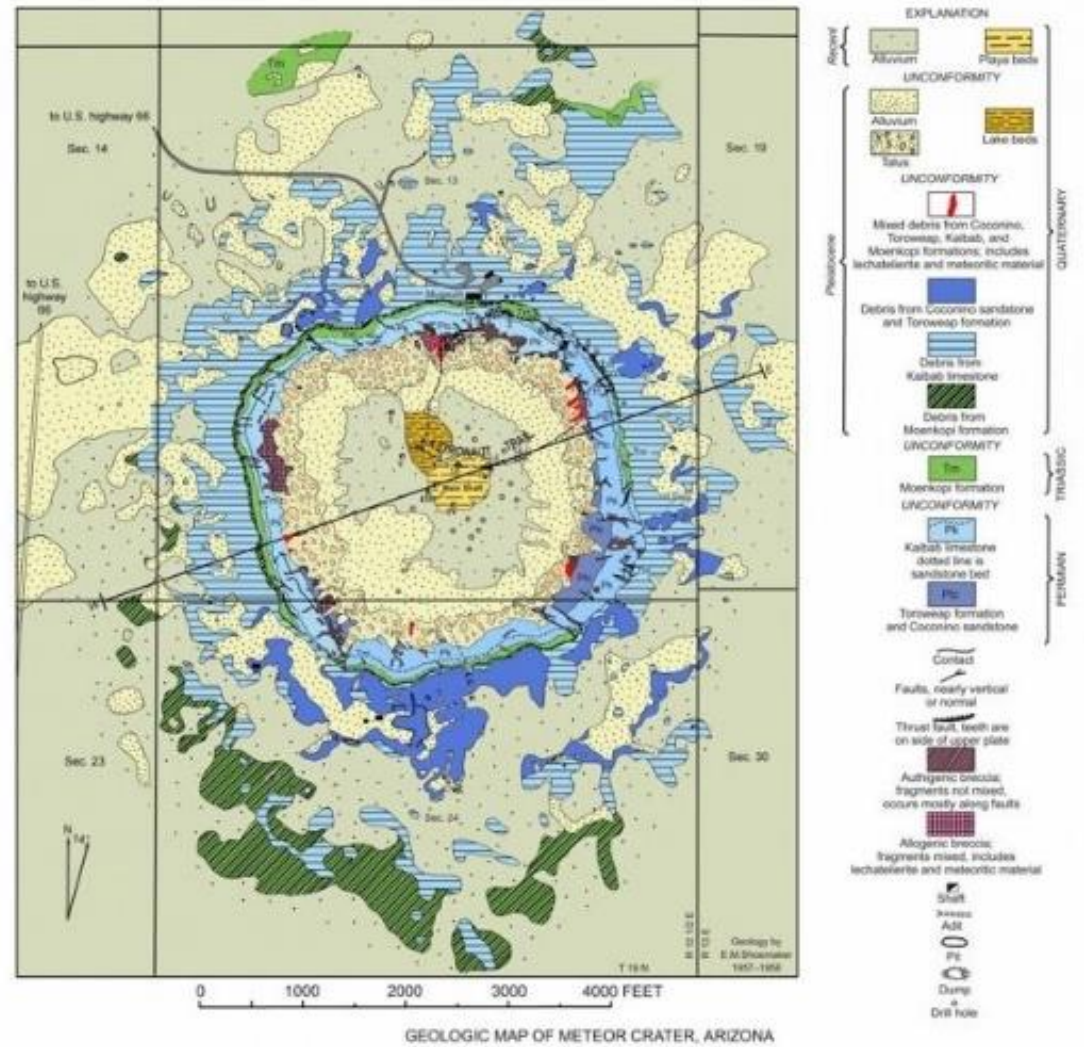
Copernicus crater

- [Satellite image](#)
- [Geologic map](#)



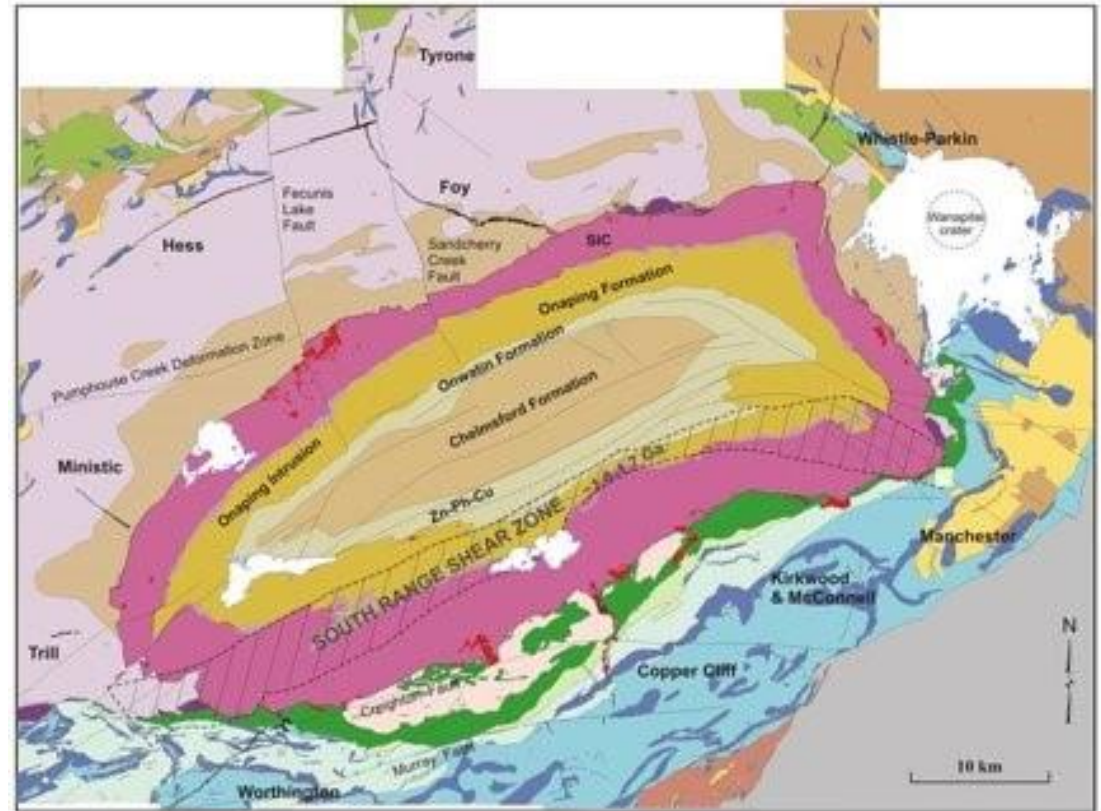
Meteor Crater

- [Satellite image](#)
- [Geologic map](#)



Sudbury Basin

- [Satellite image](#)
- [Geologic map](#)



Mistastin Crater

- [Satellite image](#)
- [Geologic map](#)

