

# Keeping people safe from geologic hazards in the Eastern Caribbean – the work of The UWI Seismic Research Centre

Presentation to WCOGS – GEM Virtual Webinars

6 February 2023

Richard Robertson

Geologist

*The UWI Seismic Research Centre*

# The UWI Seismic Research Centre

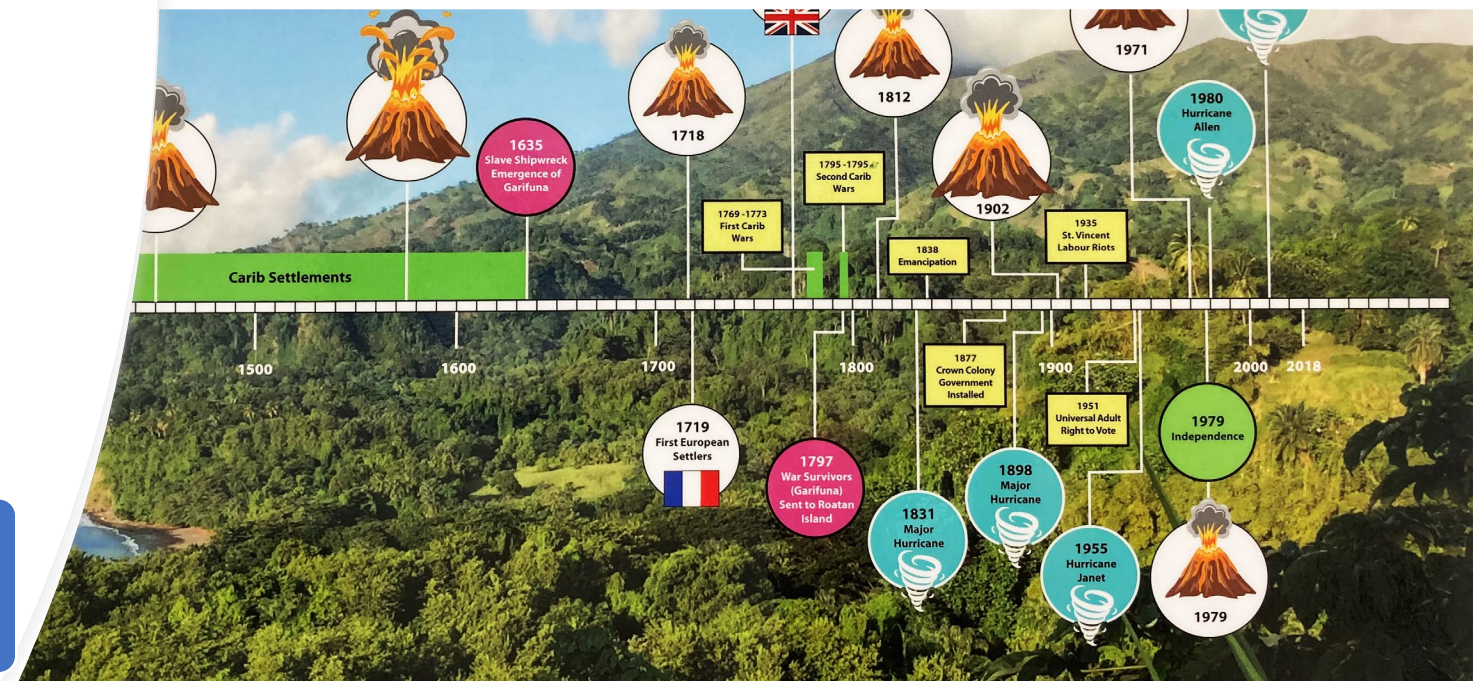
Established 1953 as Volcanological Research Department

Based in St. Augustine but serves the Eastern Caribbean

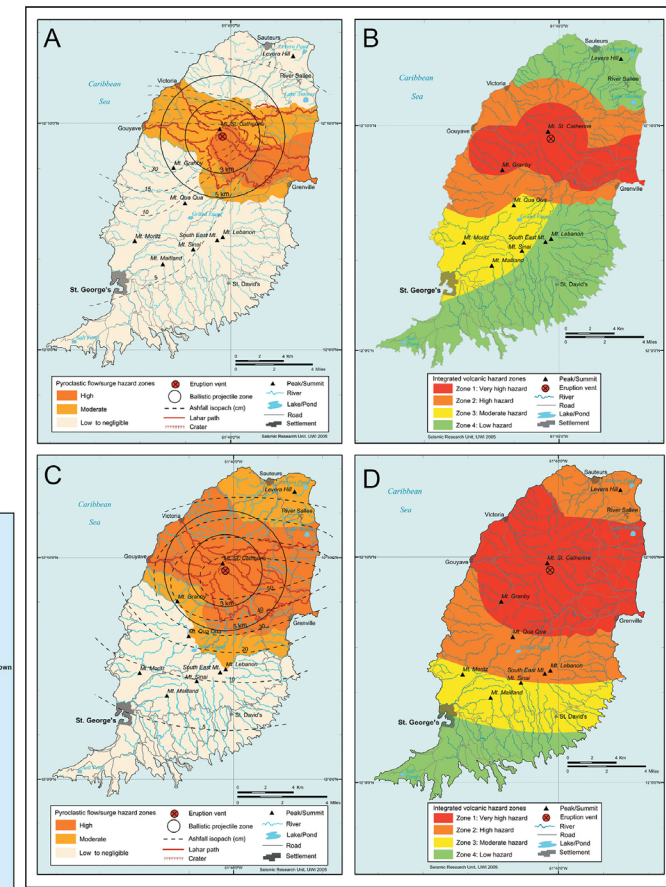
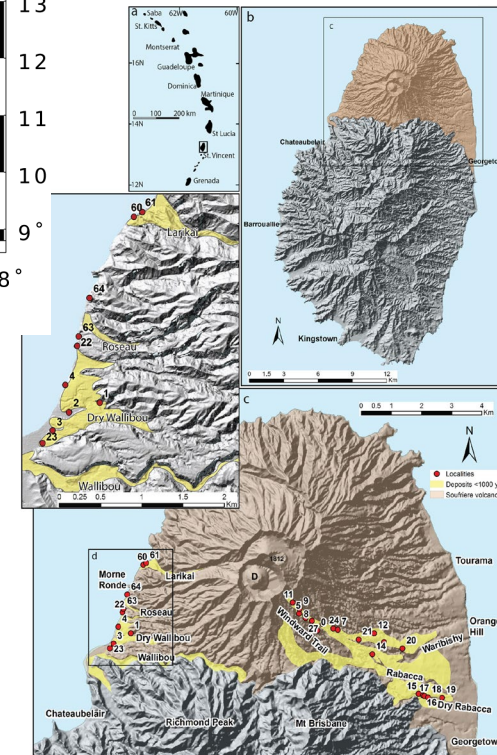
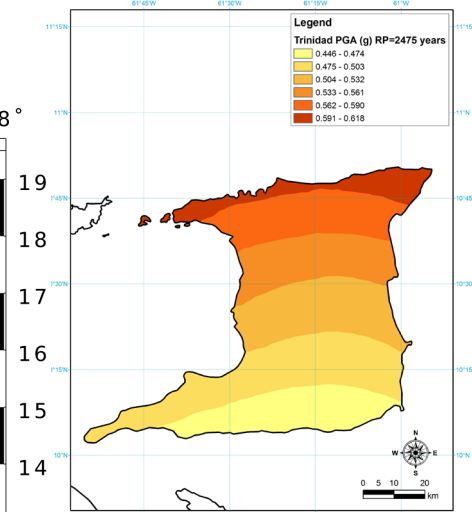
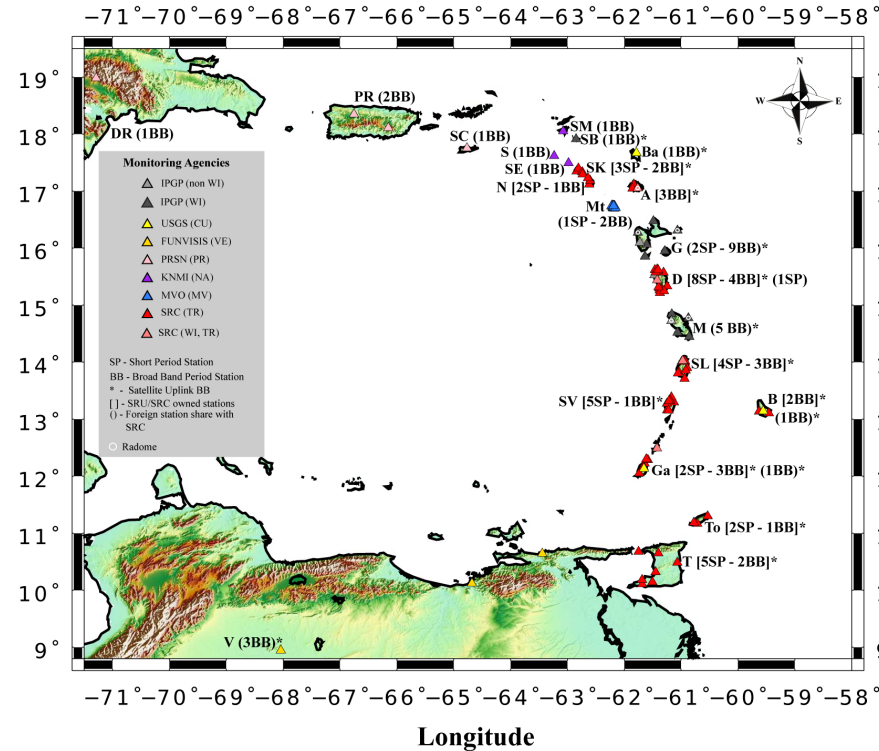
36 staff, including 6 based at the Montserrat Volcano Observatory

Largest geophysical network in Eastern Caribbean (>60 SS + 11 cGPS & geochemical)

Liaise with 9 separate government of countries that host 17 of region's 21 volcanoes



# Monitor, Mitigate, Research, Educate



# Education & Outreach

## BILLBOARDS



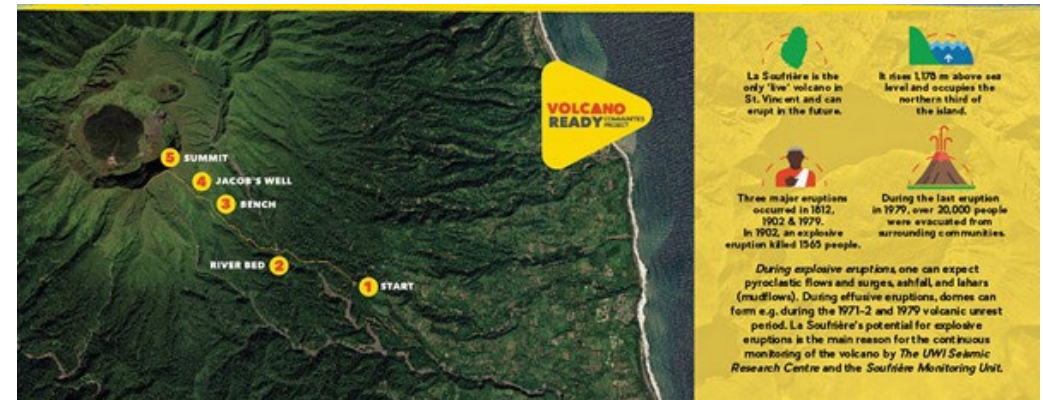
## ANIMATIONS



## TEACHING TOOLS



## TRAIL GUIDES



## SHORT FILMS



## POSTERS



# Challenges & Strategies

---

- Funding (inconsistent & deficient) => reflects low GDP-per capita of contributing territories => **grants, partnerships & collaborations**
- Logistical challenges of operating over a large geographical space consisting of separate, independent territories => **remote techniques, build local technical capacity**
- Long repose periods between volcanic eruptions => complacency => lower commitment to funding => **education & outreach**
- Impact of hydro-metereological hazards => **low-cost instruments, improve installations**
- Vandalism of field-deployed scientific equipment in remote sites => **enhance public awareness, improved security**





## Lessons & future efforts

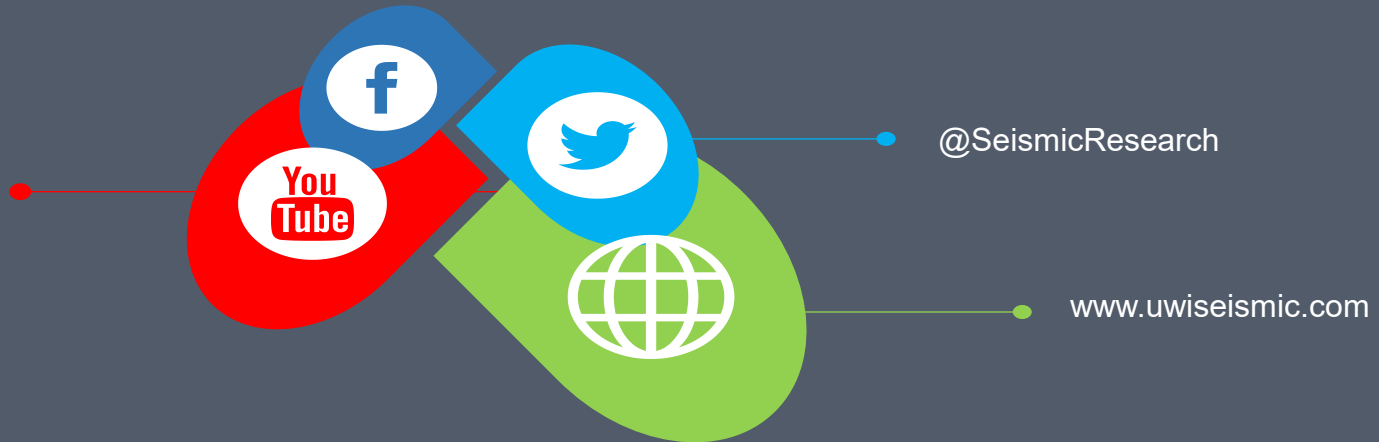
- **Build** partnerships at all levels
- **Engage** communities & stakeholders
- **Do** demand-driven research
- **Let** the past guide the future
- *Policy – prepare position papers for decision-makers*
- *Legislation – mandatory contributions*
- *Consultancy – geotechnical services, expert advise,*
- *Goodwill - leverage goodwill to garner support*

# THANKS FOR LISTENING

Find us online!

facebook.com/uwiseismic

UWISeismicResearch



Contact Us

Tel: 1-868-662-4659

E-mail: [uwiseismic@uwiseismic.com](mailto:uwiseismic@uwiseismic.com)