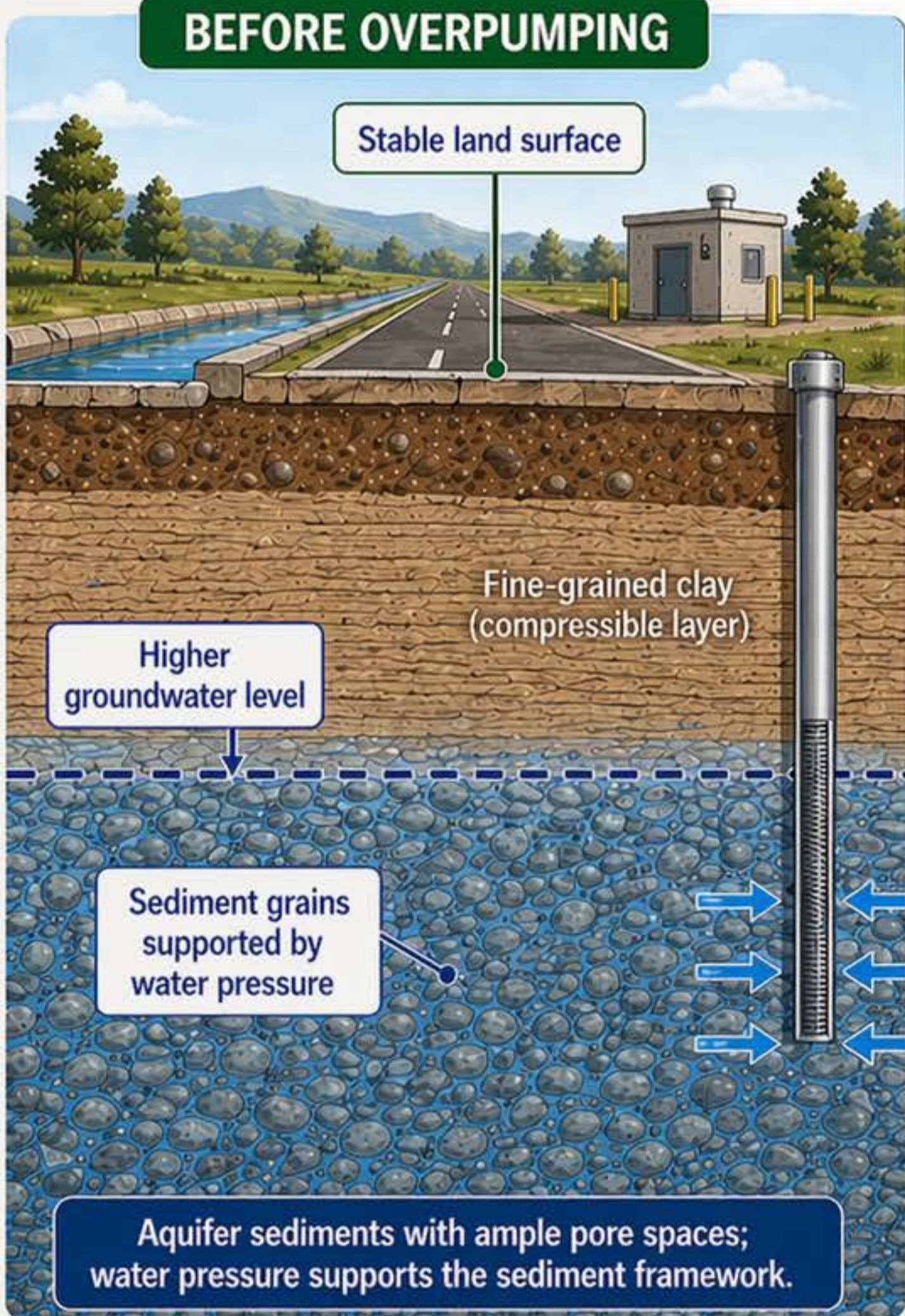


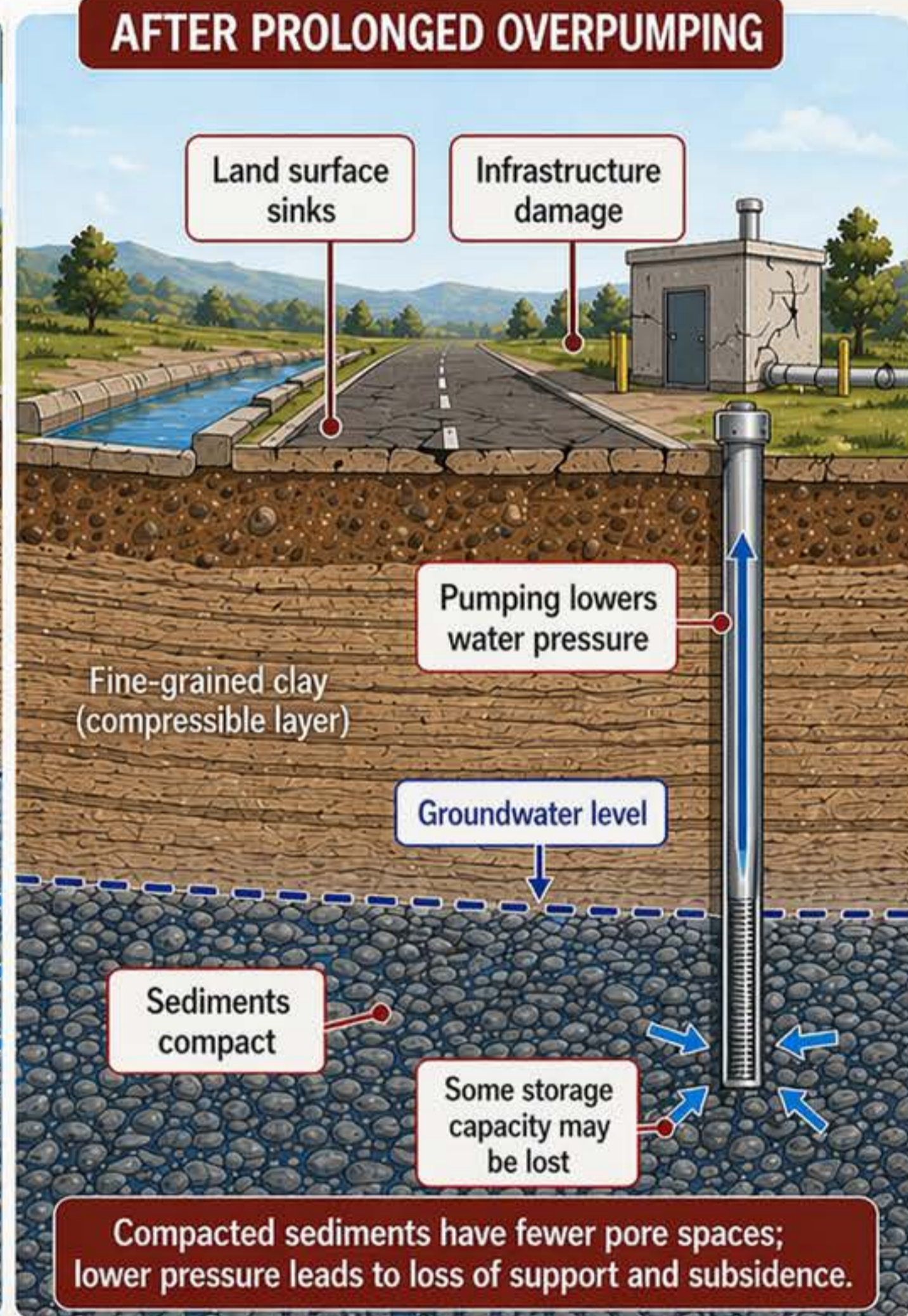
How Groundwater Depletion Can Cause Land Subsidence

Excessive groundwater pumping lowers water pressure, compacts aquifer sediments, and causes the land surface to sink.

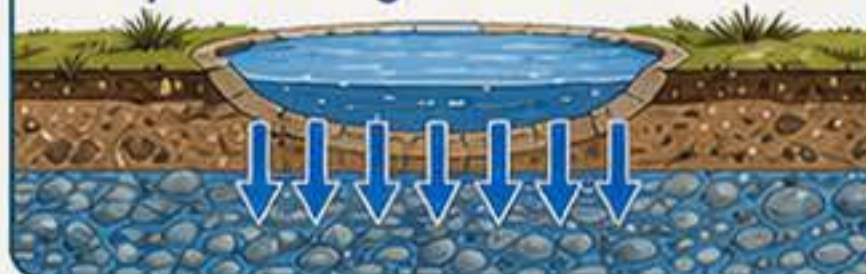
BEFORE OVERPUMPING



AFTER PROLONGED OVERPUMPING



Managed recharge can help restore groundwater levels.



! Some compaction may be permanent.



- Overpumping can lower groundwater pressure.



- When fine-grained sediments compact, the ground above can sink.



- Some lost storage capacity cannot be fully recovered.



Policy takeaway: Groundwater management protects both water supply and infrastructure. Preventing subsidence is easier than reversing it.