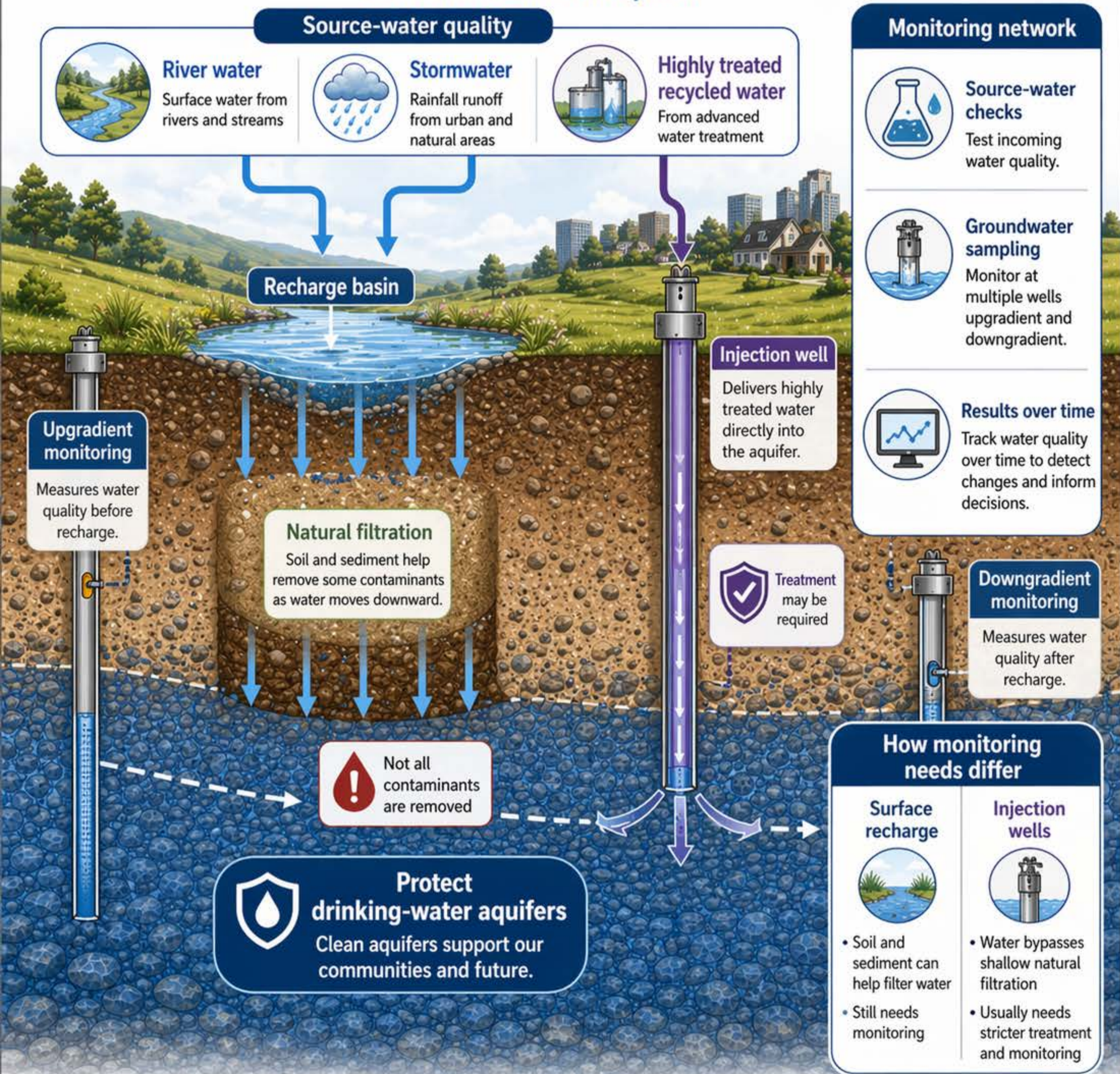


Why Water Quality Monitoring Is Central to Recharge Projects

Recharge water quality must be understood before, during, and after water enters an aquifer.



Policy takeaway:

Recharge projects must be designed around water quality, monitoring, and public trust.

- ✓ Understand water quality before, during, and after recharge
- ✓ Monitor to protect groundwater and public health
- ✓ Build confidence through transparency and accountability