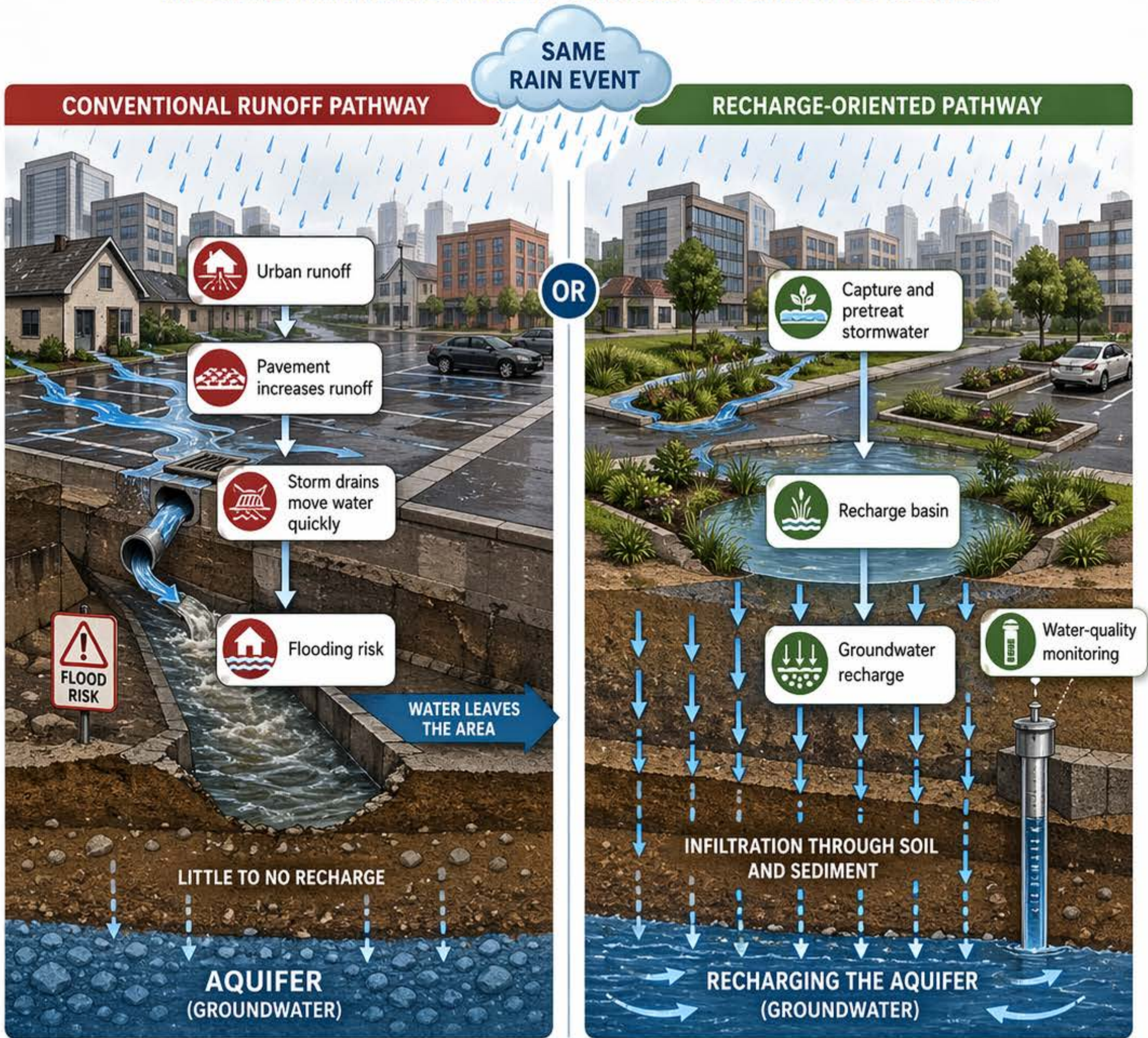


# Why Recharge Is Also Stormwater Policy

THE SAME RAINFALL. DIFFERENT CHOICES. DIFFERENT OUTCOMES.



## Conventional runoff pathway

- Faster runoff
- More flood stress
- Water leaves the area



## Recharge-oriented pathway

- Capture stormwater
- Reduce peak runoff
- Recharge groundwater where suitable



**Policy takeaway:** Stormwater policy can also be groundwater policy when runoff is captured, treated, and recharged safely.