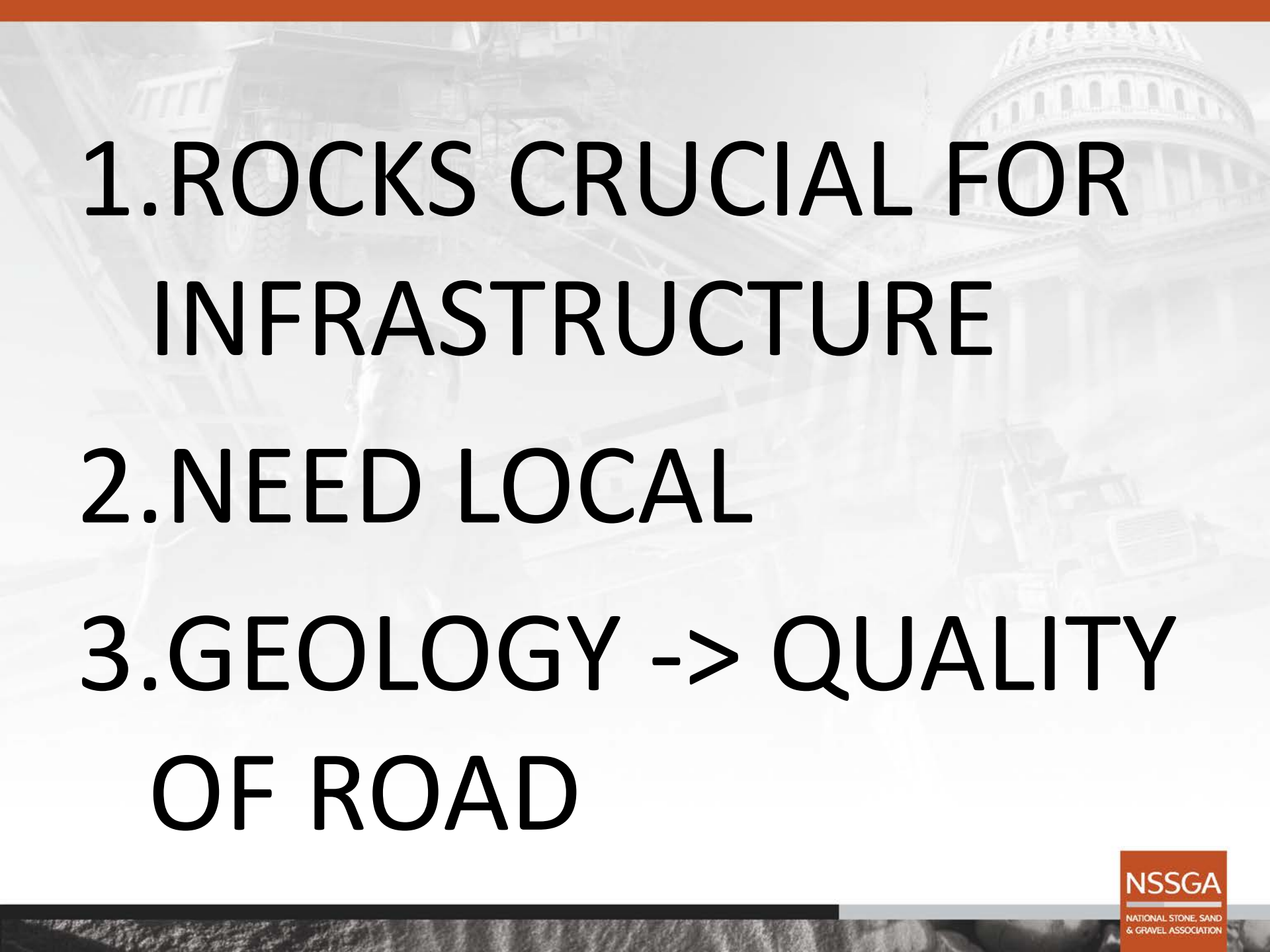


# Infrastructure is made of **ROCKS!**



Emily Coyner

[ecoyner@nssga.org](mailto:ecoyner@nssga.org)




**1. ROCKS CRUCIAL FOR  
INFRASTRUCTURE**

**2. NEED LOCAL**

**3. GEOLOGY -> QUALITY  
OF ROAD**

**NSSGA**

NATIONAL STONE, SAND  
& GRAVEL ASSOCIATION



**AGGREGATES =  
STONE, SAND &  
GRAVEL USED FOR  
CONSTRUCTION**

**FHWA: Wherefore Art Thou  
Aggregate Resources for  
Highways?**

**US Geologic Survey: Minerals  
Information**

**NSSGA: Aggregates Map**

**NSSGA**

NATIONAL STONE, SAND  
& GRAVEL ASSOCIATION





**NSSGA**

NATIONAL STONE, SAND  
& GRAVEL ASSOCIATION



**Quarries:**

**Why So Many?**

**Why So Big?**

**Why HERE?**

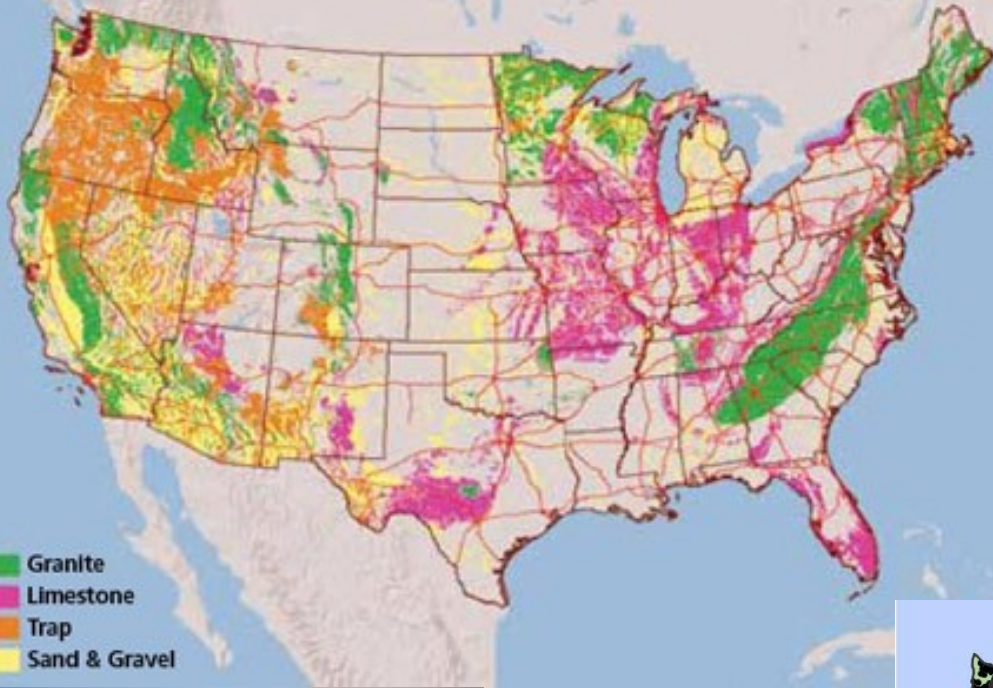
**Answer: Geology**

**NSSGA**

NATIONAL STONE, SAND  
& GRAVEL ASSOCIATION



# Generalized Locations Of Aggregate Resources



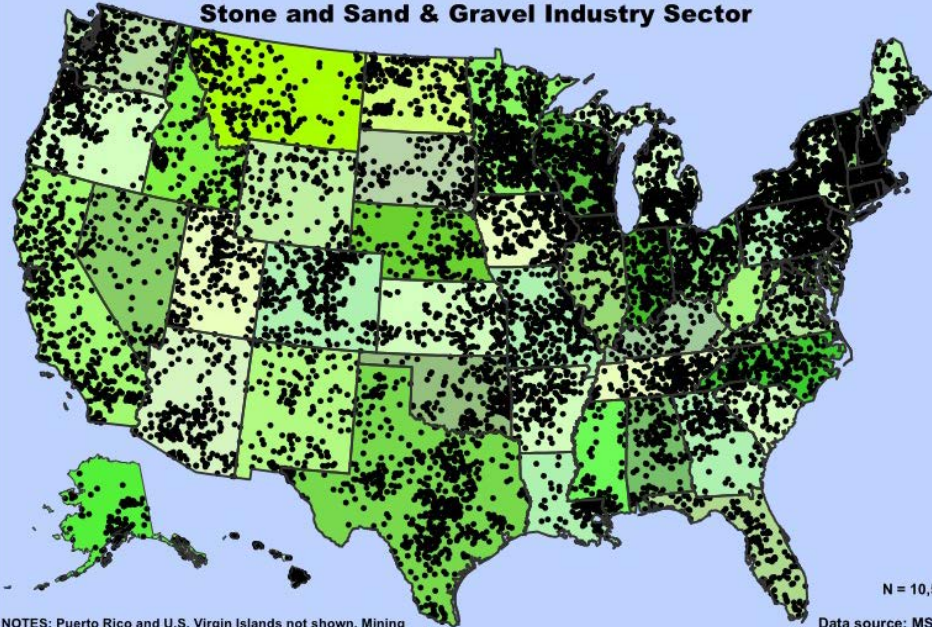
- Granite
- Limestone
- Trap
- Sand & Gravel

Source: Bill Langer, USGS



© geology.com

## Active Surface Mining Operations, 2014 Stone and Sand & Gravel Industry Sector



N = 10,599

Data source: MSHA

NOTES: Puerto Rico and U.S. Virgin Islands not shown. Mining operations that reported any mine operator employment during the year are spotted randomly within counties. Mines where only contractors were working did not show any employment and are not displayed.



# ROCK -> ROAD

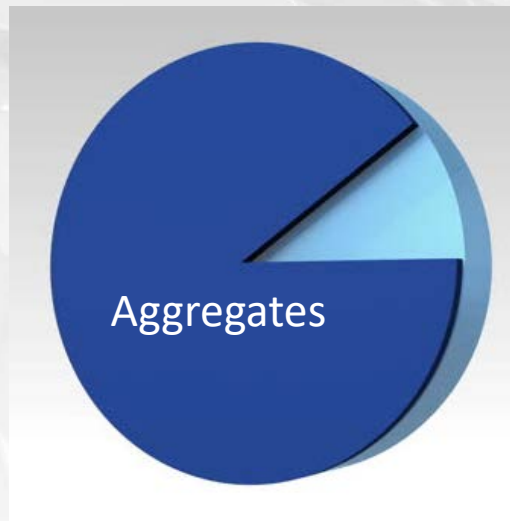
US Geologic Survey -> MAPS,  
SOURCE, TEST

FHWA, State Departments of  
Transportation-> MIX

- Available sources
- Traffic & weather



Aggregates + Petroleum =  
Asphalt



Aggregates + Cement +  
Water = Concrete

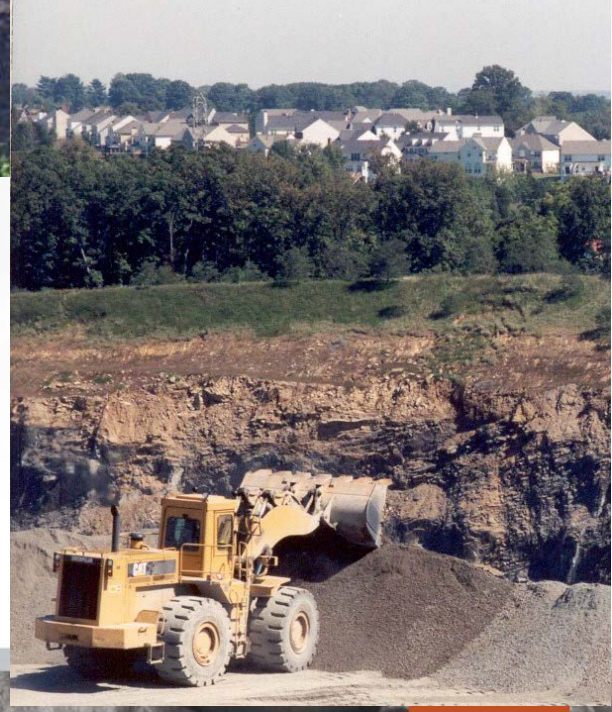
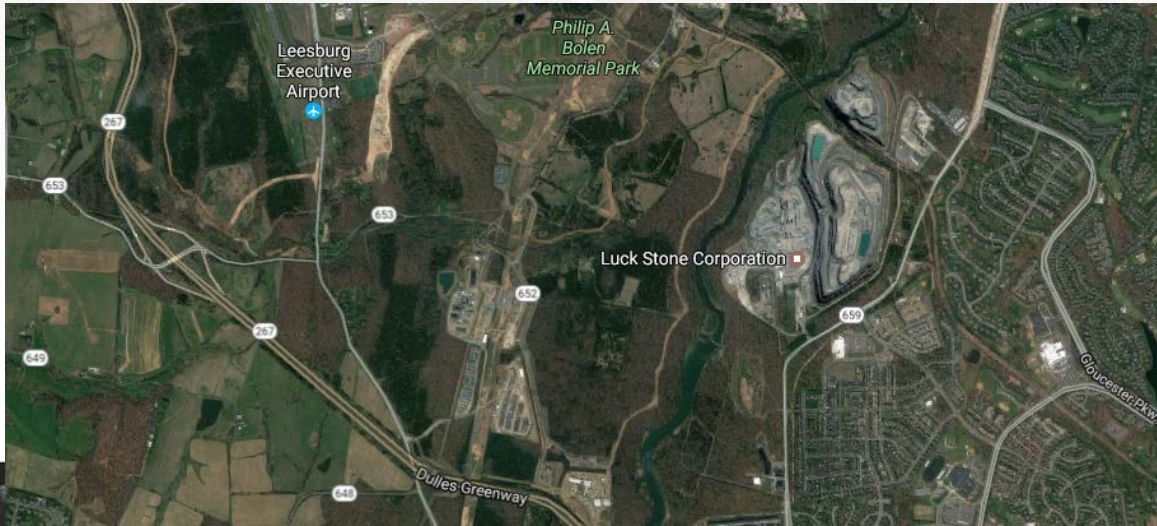
The background of the slide is a faded, grayscale image. On the left side, there is a quarry scene with a large excavator and a truck. On the right side, there is a prominent image of a state capitol building with a large dome. The text is centered over this background.

# **QUARRIES: LAND USE AND LONG- TERM BENEFIT**

**NSSGA**

NATIONAL STONE, SAND  
& GRAVEL ASSOCIATION













**NSSGA**

NATIONAL STONE, SAND  
& GRAVEL ASSOCIATION



**1. ROCKS CRUCIAL FOR  
INFRASTRUCTURE**

**2. GEOLOGY -> QUALITY  
OF ROAD**

**3. LONG TERM BENEFIT**